



PRIME-AIRE



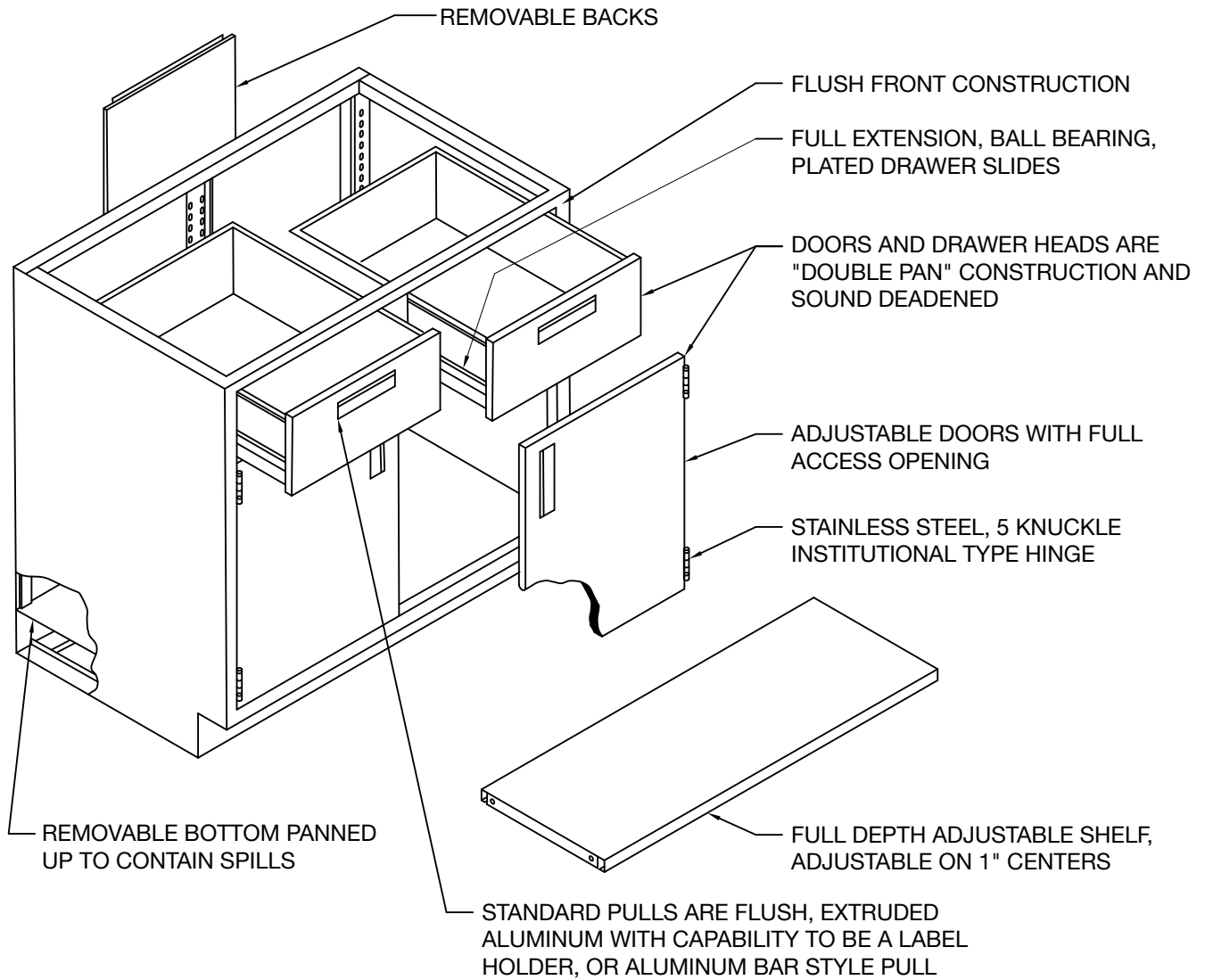
Metal Laboratory Systems

Table of Contents

Base Cabinets - Construction Details	1
Base Cabinets - Standing / Counter Height.....	2-5
Mobile Base Cabinets	5
Sink and Fume Hood Base Cabinets - Standing / Counter Height.....	6
Base Cabinets - Special Purpose Bases	7
Base Cabinets - Sitting / Desk Height	8-9
ADA Height Base Cabinets - Single Width.....	10
ADA Height Base Cabinets - Double Width	11
Sink and Fume Hood Base Cabinets - Sitting/Desk and ADA Height	12
Acid Storage Cabinet	13
Flammable Storage Cabinet.....	13
Standard Shelf.....	13
Pull-Out Shelf	13
Wall Case Units	14-15
Wall Case Units - Double Sided	15
Wall Case Corner Units	16
Floor Case Units.....	17-18
Aprons and Drawer Housings	19
Knee Space Rails	19
Utility Tables and Components	20
Accessories	21-22
Filler Panels	23
Fume Hoods.....	24



Base Cabinets - Construction Details



ADDITIONAL SPECIFICATIONS

All surfaces shall be painted or zinc plated. The paint is a chemical resistant baked on epoxy powder. Specific test data is available upon request.

Gauges of base cabinet components are as follows:

Aprons	18 ga.	Legs - 2" sq. tube	18 ga.
Back Panels	20 ga.	Shelves	18 ga.
Bottom Panels	18 ga.	Side Panels	18 ga.
Drawer / Door Outer Panel	20 ga.	Table Frames	18 ga.
Door Inner Panel	20 ga.	K & V Shelf Clip	16 ga.
Drawer Bodies	20 ga.	Hinge	13 ga.

For complete specifications, please request our full line of products specifications.
SUBJECT TO CHANGE WITHOUT NOTICE



PRIME industries, inc.
www.piiilab.com

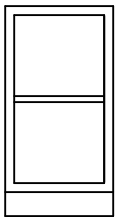
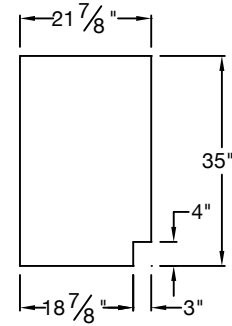
Base Cabinets - Standing / Counter Height

Standing / Counter height base cabinets are 35" High x 22" Deep. Units are available in various widths as shown. Drawer units feature full extension slides. A single shelf is standard in the units shown. Additional shelves are available (see page 13). Specify left or right hand doors. Hand is indicated by side of door upon which hinge is located.

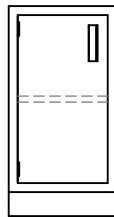
Part Numbering System

Sample: B3536-048* 1 = Base unit 4 = #Doors
 12233-4567 2 = Height 5 = #Drawers
 3 = Width 6 = #Half Drawers
 7 = Features

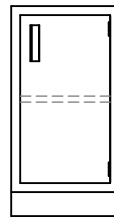
*"F" = File Drawer
 *"S" = Sink Unit
 *"P" = Panel
 *"R" = Right Hinge Facing Cabinet
 *"L" = Left Hinge Facing Cabinet



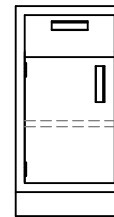
B3515-000
 B3518-000
 B3524-000



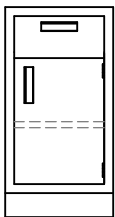
B3512-100(L)
 B3515-100(L)
 B3518-100(L)
 B3524-100(L)



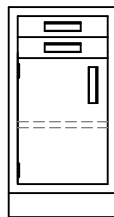
B3512-100(R)
 B3515-100(R)
 B3518-100(R)
 B3524-100(R)



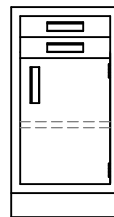
B3515-110(L)
 B3518-110(L)
 B3524-110(L)



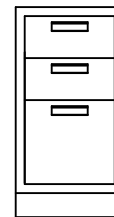
B3515-110(R)
 B3518-110(R)
 B3524-110(R)



B3515-102(L)
 B3518-102(L)
 B3524-102(L)



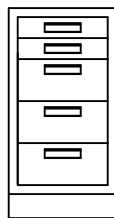
B3515-102(R)
 B3518-102(R)
 B3524-102(R)



B3515-F20
 B3518-F20
 B3524-F20



B3515-040
 B3518-040
 B3524-040



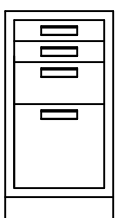
B3515-032
 B3518-032
 B3524-032



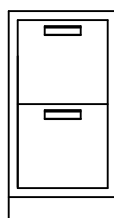
B3515-024
 B3518-024
 B3524-024



B3515-008
 B3518-008
 B3524-008



B3515-F12
 B3518-F12
 B3524-F12

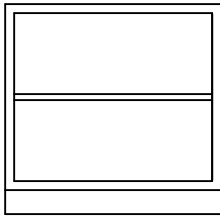


B3515-FFO
 B3518-FFO
 B3524-FFO

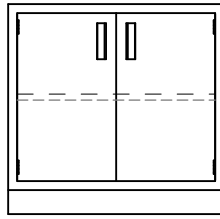


PRIME industries, inc.
 www.piiilab.com

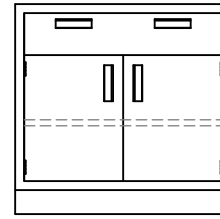
Base Cabinets - Standing / Counter Height



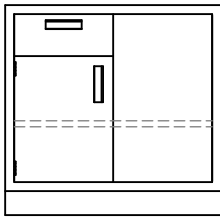
B3530-000
B3536-000
B3542-000
B3548-000



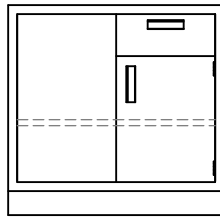
B3530-200
B3536-200
B3542-200
B3548-200



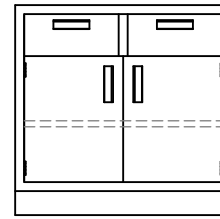
B3530-210
B3536-210
B3542-210
B3548-210



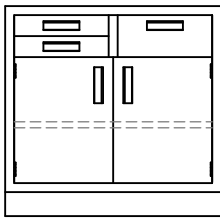
B3530-110(L)SP
B3536-110(L)SP
B3542-110(L)SP
B3548-110(L)SP



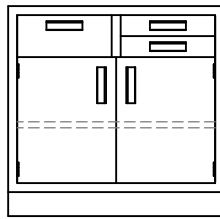
B3530-110(R)SP
B3536-110(R)SP
B3542-110(R)SP
B3548-110(R)SP



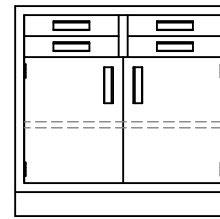
B3530-220
B3536-220
B3542-220
B3548-220



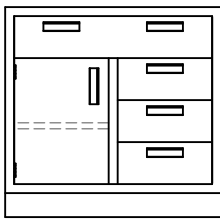
B3530-212A
B3536-212A
B3542-212A
B3548-212A



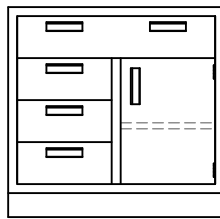
B3530-212B
B3536-212B
B3542-212B
B3548-212B



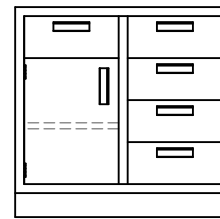
B3530-204
B3536-204
B3542-204
B3548-204



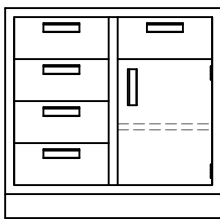
B3530-140B(L)
B3536-140B(L)
B3542-140B(L)
B3548-140B(L)



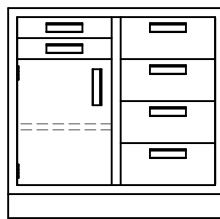
B3530-140B(R)
B3536-140B(R)
B3542-140B(R)
B3548-140B(R)



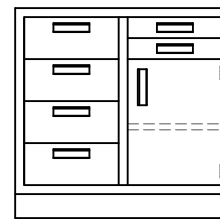
B3530-150(L)
B3536-150(L)
B3542-150(L)
B3548-150(L)



B3530-150(R)
B3536-150(R)
B3542-150(R)
B3548-150(R)



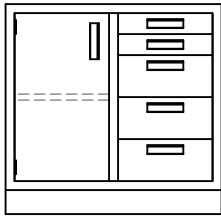
B3530-142(L)
B3536-142(L)
B3542-142(L)
B3548-142(L)



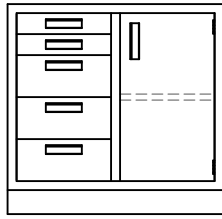
B3530-142(R)
B3536-142(R)
B3542-142(R)
B3548-142(R)



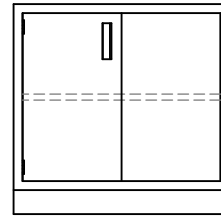
Base Cabinets - Standing / Counter Height



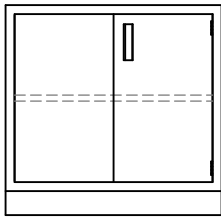
B3530-132(L)
B3536-132(L)
B3542-132(L)
B3548-132(L)



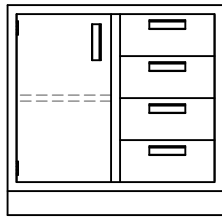
B3530-132(R)
B3536-132(R)
B3542-132(R)
B3548-132(R)



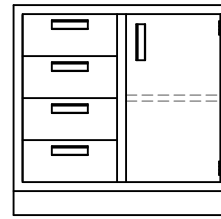
B3530-100(L)SP
B3536-100(L)SP
B3542-100(L)SP
B3548-100(L)SP



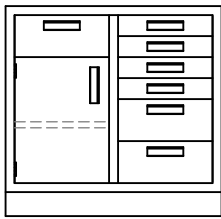
B3530-100(R)SP
B3536-100(R)SP
B3542-100(R)SP
B3548-100(R)SP



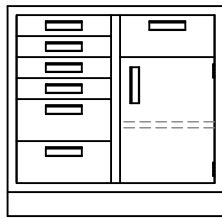
B3530-140A(L)
B3536-140A(L)
B3542-140A(L)
B3548-140A(L)



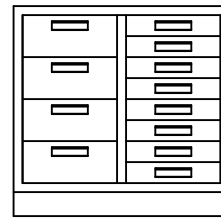
B3530-140A(R)
B3536-140A(R)
B3542-140A(R)
B3548-140A(R)



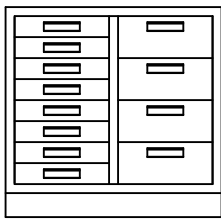
B3530-134(L)
B3536-134(L)
B3542-134(L)
B3548-134(L)



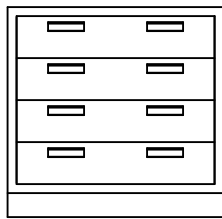
B3530-134(R)
B3536-134(R)
B3542-134(R)
B3548-134(R)



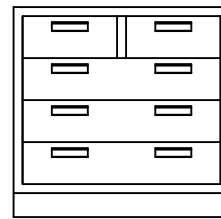
B3530-048A
B3536-048A
B3542-048A
B3548-048A



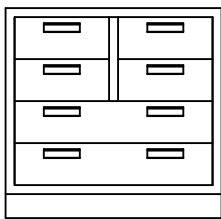
B3530-048B
B3536-048B
B3542-048B
B3548-048B



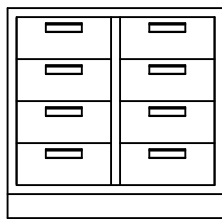
B3530-040
B3536-040
B3542-040
B3548-040



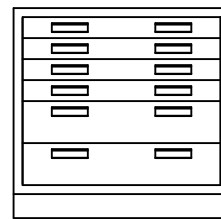
B3530-050
B3536-050
B3542-050
B3548-050



B3530-060
B3536-060
B3542-060
B3548-060



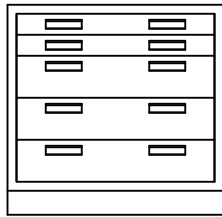
B3530-080
B3536-080
B3542-080
B3548-080



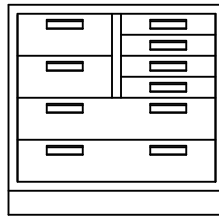
B3530-024
B3536-024
B3542-024
B3548-024



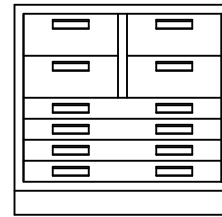
Base Cabinets - Standing / Counter Height



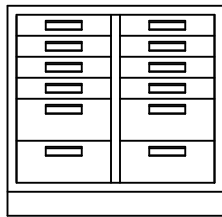
B3530-032
B3536-032
B3542-032
B3548-032



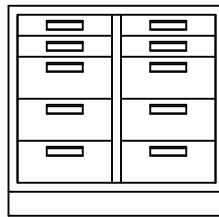
B3530-044A
B3536-044A
B3542-044A
B3548-044A



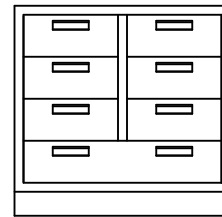
B3530-044B
B3536-044B
B3542-044B
B3548-044B



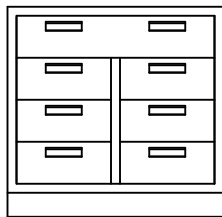
B3530-048C
B3536-048C
B3542-048C
B3548-048C



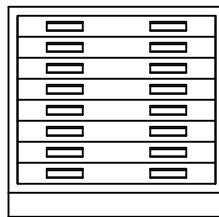
B3530-064
B3536-064
B3542-064
B3548-064



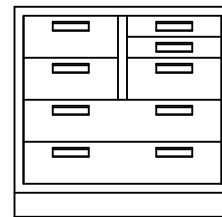
B3530-070A
B3536-070A
B3542-070A
B3548-070A



B3530-070B
B3536-070B
B3542-070B
B3548-070B



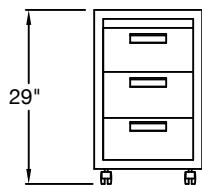
B3530-008
B3536-008
B3542-008
B3548-008



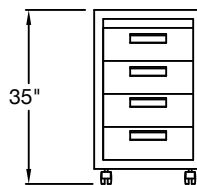
B3530-052
B3536-052
B3542-052
B3548-052

Mobile Base Cabinets

Mobile base cabinets are open on the top and are not provided with a countertop.



MB2915-030
MB2918-030
MB2924-030
MB2930-030

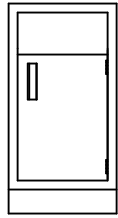


MB3515-040
MB3518-040
MB3524-040
MB3530-040



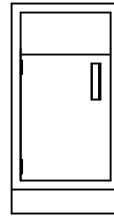
PRIME industries, inc.
www.pii lab.com

Sink and Fume Hood Base Cabinets - Standing / Counter Height



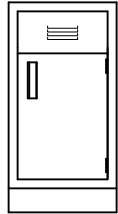
SINK BASE
B3512-10S(R)
B3518-10S(R)
B3524-10S(R)

HOOD BASE
B3512-10P(R)
B3518-10P(R)
B3524-10P(R)

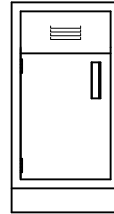


SINK BASE
B3512-10S(L)
B3518-10S(L)
B3524-10S(L)

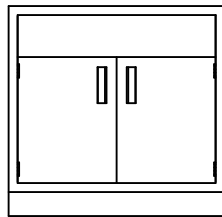
HOOD BASE
B3512-10P(L)
B3518-10P(L)
B3524-10P(L)



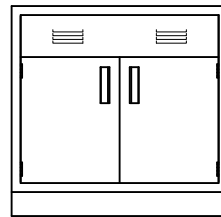
SINK BASE
B3518-10S (LVRS) R
B3524-10S (LVRS) R



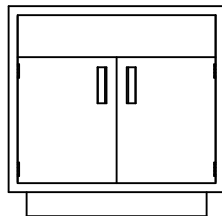
SINK BASE
B3518-10S (LVRS) L
B3524-10S (LVRS) L



SINK BASE	HOOD BASE
B3530-20S	B3530-20P
B3536-20S	B3536-20P
B3542-20S	B3542-20P
B3548-20S	B3548-20P
B3552-20S	B3552-20P
B3558-20S	B3558-20P

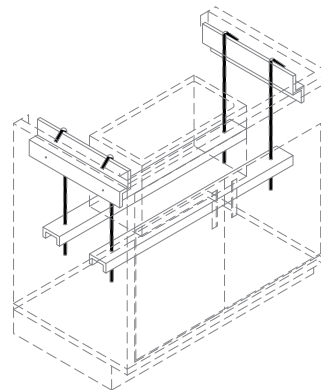


SINK BASE
B3530-20S (LVRS)
B3536-20S (LVRS)
B3542-20S (LVRS)
B3548-20S (LVRS)
B3552-20S (LVRS)
B3558-20S (LVRS)



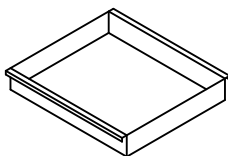
SINK ISLAND BASE
B3552-20SI
B3558-20SI

HOOD ISLAND BASE
B3552-20PI
B3558-20PI



SINK SUPPORT ASSEMBLY
SS-C14
SS-18
SS-24
SS-30
SS-36
SS-48
SS-42
SS-52
SS-58

OPTIONAL DRIP PANS FOR SINK CABINETS



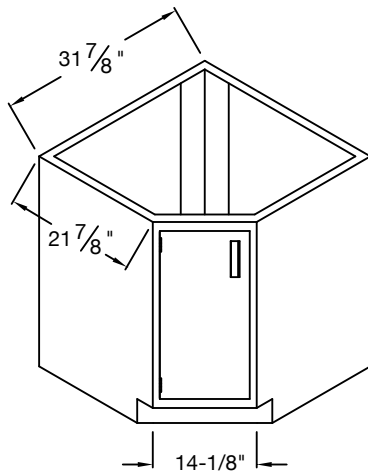
ASDP22-15
ASDP22-18
ASDP22-24
ASDP22-30
ASDP22-36
ASDP22-42
ASDP22-48
ASDP22-52
ASDP22-58

NOTES:

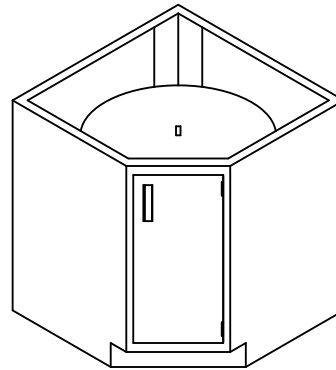
- Sink cabinets feature sink support channels (welded to the sides) and an open back for service access. Sink supports sold separately.
- Sink cabinets do not include a shelf.



Base Cabinets - Special Purpose Bases

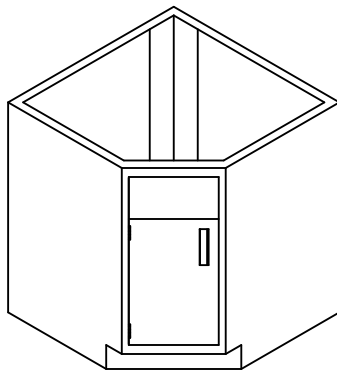


STANDING HEIGHT
C3514-100(L)
SITTING / DESK HEIGHT
C2914-100(L)

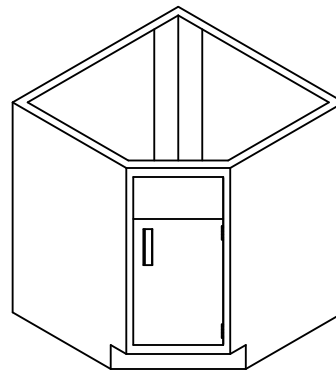


(SHOWN WITH OPTIONAL LAZY SUSAN INSTALLED)

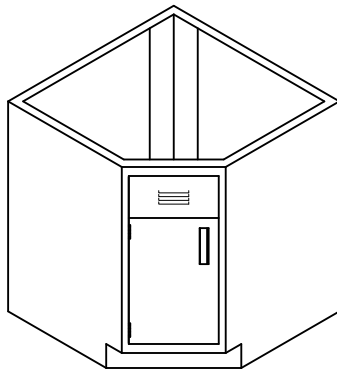
STANDING HEIGHT
C3514-100(R)
SITTING / DESK HEIGHT
C2914-100(R)



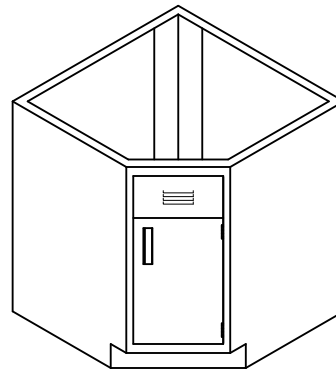
STANDING HEIGHT
C3514-10S(L)
SITTING / DESK HEIGHT
C2914-10S(L)



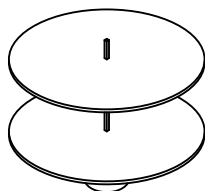
STANDING HEIGHT
C3514-10S(R)
SITTING / DESK HEIGHT
C2914-10S(R)



STANDING HEIGHT
C3514-10S(L) LOUVERED
SITTING / DESK HEIGHT
C2914-10S(L) LOUVERED



STANDING HEIGHT
C3514-10S(R) LOUVERED
SITTING / DESK HEIGHT
C2914-10S(R) LOUVERED



OPTIONAL LAZY SUSAN
LS-29
LS-35



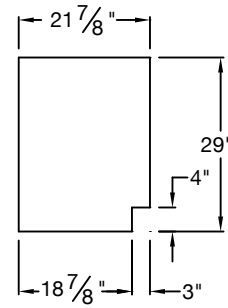
Base Cabinets - Sitting / Desk Height

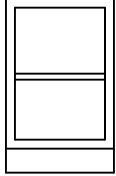
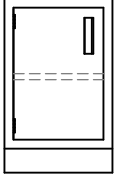
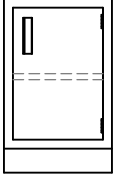
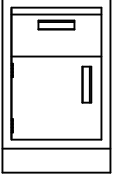
Sitting / Desk Height base cabinets are 29" High x 22" Deep. Units are available in various widths as shown. Drawer units feature full extension slides. A single shelf is standard in the units shown. Additional shelves are available (see page 13). Specify left or right hand doors. Hand is indicated by side of door upon which hinge is located.

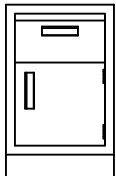
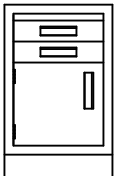
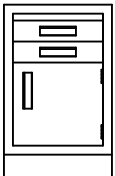
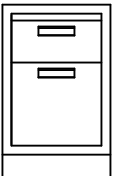
Part Numbering System

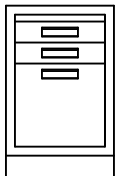
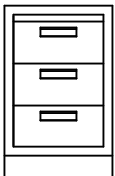
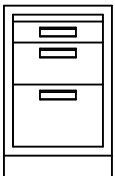
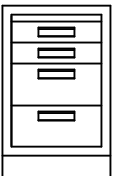
Sample: B3536-048* 1 = Base unit 4 = #Doors
 12233-4567 2 = Height 5 = #Drawers
 3 = Width 6 = #Half Drawers
 7 = Features

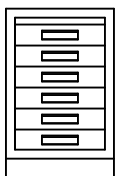
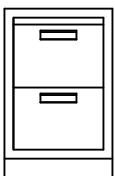
**"F" = File Drawer
 **"S" = Sink Unit
 **"P" = Panel
 **"R" = Right Hinge Facing Cabinet
 **"L" = Left Hinge Facing Cabinet
 **"B" = Bin Drawer



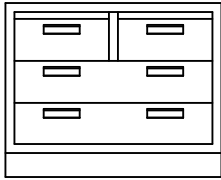
	B2915-000 B2918-000 B2924-000 B2930-000 B2936-000 B2942-000 B2948-000		B2912-100(L) B2915-100(L) B2918-100(L) B2924-100(L)		B2912-100(R) B2915-100(R) B2918-100(R) B2924-100(R)		B2915-110(L) B2918-110(L) B2924-110(L)
--	---	---	--	---	--	---	--

	B2915-110(R) B2918-110(R) B2924-110(R)		B2915-102(L) B2918-102(L) B2924-102(L)		B2915-102(R) B2918-102(R) B2924-102(R)		B2915-F10 B2918-F10 B2924-F10
---	--	--	--	--	--	--	-------------------------------------

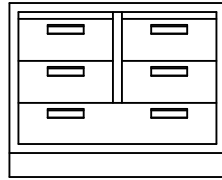
	B2915-F02 B2918-F02 B2924-F02		B2915-030 B2918-030 B2924-030		B2915-B11 B2918-B11 B2924-B11		B2915-022 B2918-022 B2924-022
--	-------------------------------------	---	-------------------------------------	---	-------------------------------------	---	-------------------------------------

	B2915-006 B2918-006 B2924-006		B2915-BB0 B2918-BB0 B2924-BB0
--	-------------------------------------	---	-------------------------------------

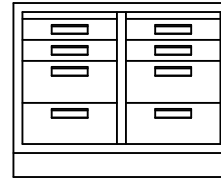
Base Cabinets - Sitting / Desk Height



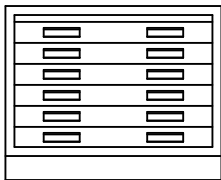
B2930-040
B2936-040
B2942-040
B2948-040



B2930-050
B2936-050
B2942-050
B2948-050



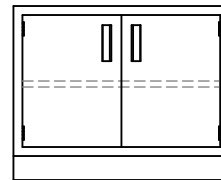
B2930-044
B2936-044
B2942-044
B2948-044



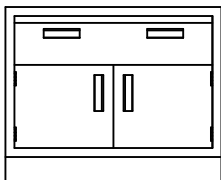
B2930-006
B2936-006
B2942-006
B2948-006



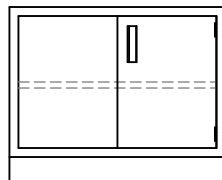
B2930-060
B2936-060
B2942-060
B2948-060



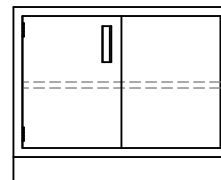
B2930-200
B2936-200
B2942-200
B2948-200



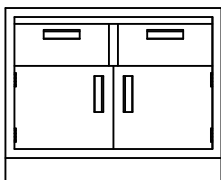
B2930-210
B2936-210
B2942-210
B2948-210



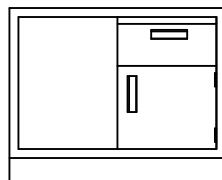
B2930-100(R)SP
B2936-100(R)SP
B2942-100(R)SP
B2948-100(R)SP



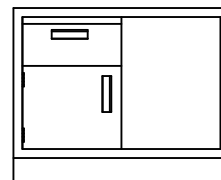
B2930-100(L)SP
B2936-100(L)SP
B2942-100(L)SP
B2948-100(L)SP



B2930-220
B2936-220
B2942-220
B2948-220



B2930-110(R)SP
B2936-110(R)SP
B2942-110(R)SP
B2948-110(R)SP



B2930-110(L)SP
B2936-110(L)SP
B2942-110(L)SP
B2948-110(L)SP

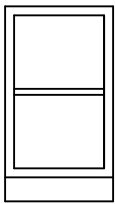
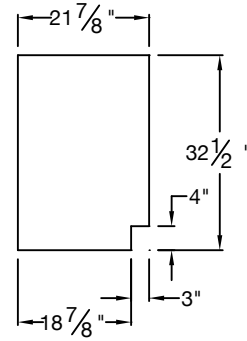


ADA Height Base Cabinets - Single Width

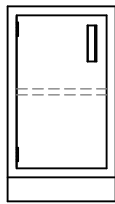
ADA Height base cabinets are 32.5" High x 22" Deep. Units are available in various widths as shown. Drawer units feature full extension slides. A single shelf is standard in the units shown. Additional shelves are available (see page 13). Specify left or right hand doors. Hand is indicated by side of door upon which hinge is located.

Part Numbering System

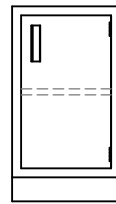
Sample: B3336-111* 1 = Base unit 4 = #Doors
 12233-4567 2 = Nominal Height 5 = #Drawers
 3 = Width 6 = #Half Drawers
 *"F" = File Drawer 7 = Features
 *"S" = Sink Unit
 *"P" = Panel
 *"R" = Right Hinge Facing Cabinet
 *"L" = Left Hinge Facing Cabinet



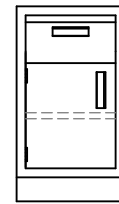
B3312-000
 B3315-000
 B3318-000
 B3324-000



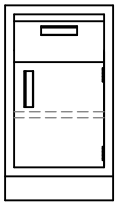
B3312-100(L)
 B3315-100(L)
 B3318-100(L)
 B3324-100(L)



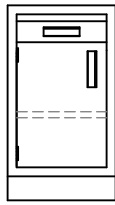
B3312-100(R)
 B3315-100(R)
 B3318-100(R)
 B3324-100(R)



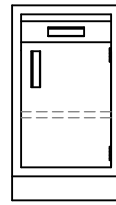
B3315-110(L)
 B3318-110(L)
 B3324-110(L)



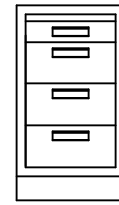
B3315-110(R)
 B3318-110(R)
 B3324-110(R)



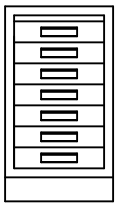
B3315-101(L)
 B3318-101(L)
 B3324-101(L)



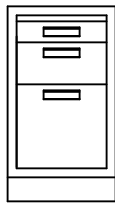
B3315-101(R)
 B3318-101(R)
 B3324-101(R)



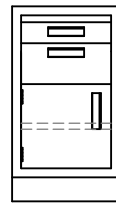
B3315-031
 B3318-031
 B3324-031



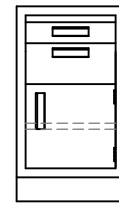
B3315-007
 B3318-007
 B3324-007



B3315-F11
 B3318-F11
 B3324-F11



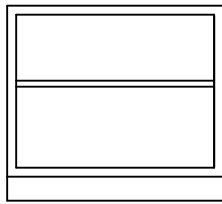
B3315-111(L)
 B3318-111(L)
 B3324-111(L)



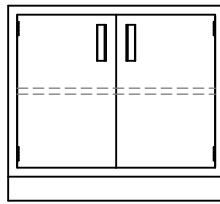
B3315-111(R)
 B3318-111(R)
 B3324-111(R)



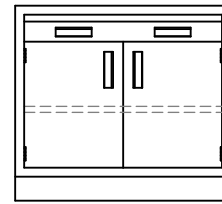
ADA Height Base Cabinets - Double Width



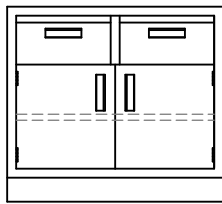
B3330-000
B3336-000
B3342-000
B3348-000



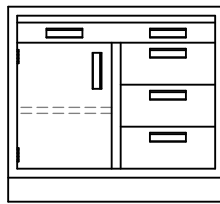
B3330-200
B3336-200
B3342-200
B3348-200



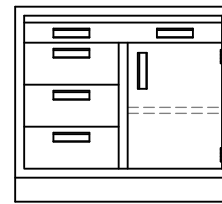
B3330-201
B3336-201
B3342-201
B3348-201



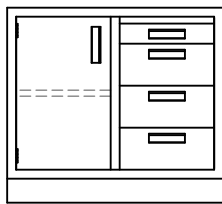
B3330-220
B3336-220
B3342-220
B3348-220



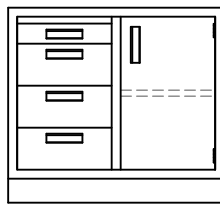
B3330-131B(L)
B3336-131B(L)
B3342-131B(L)
B3348-131B(L)



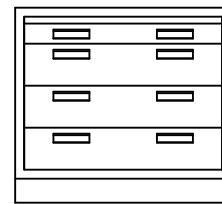
B3330-131B(R)
B3336-131B(R)
B3342-131B(R)
B3348-131B(R)



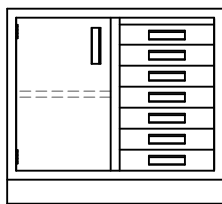
B3330-131A(L)
B3336-131A(L)
B3342-131A(L)
B3348-131A(L)



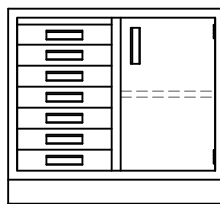
B3330-131A(R)
B3336-131A(R)
B3342-131A(R)
B3348-131A(R)



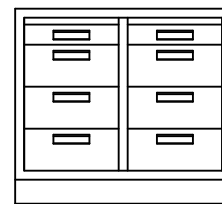
B3330-031
B3336-031
B3342-031
B3348-031



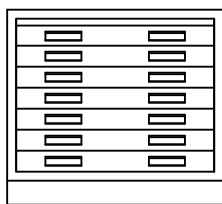
B3330-107(L)
B3336-107(L)
B3342-107(L)
B3348-107(L)



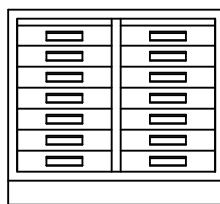
B3330-107(R)
B3336-107(R)
B3342-107(R)
B3348-107(R)



B3330-062
B3336-062
B3342-062
B3348-062



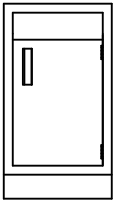
B3330-007
B3336-007
B3342-007
B3348-007



B3330-0014
B3336-0014
B3342-0014
B3348-0014



Sink and Fume Hood Base Cabinets - Sitting/Desk and ADA Height

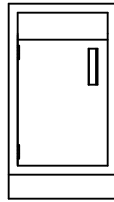


SINK BASE

B2912-10S (R) B3312-10S (R)
 B2915-10S (R) B3315-10S (R)
 B2918-10S (R) B3318-10S (R)
 B2924-10S (R) B3324-10S (R)

HOOD BASE

B2912-10P (R)
 B2915-10P (R)
 B2918-10P (R)
 B2924-10P (R)

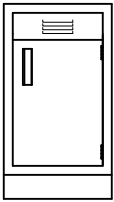


SINK BASE

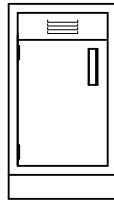
B2912-10S (L) B3312-10S (L)
 B2915-10S (L) B3315-10S (L)
 B2918-10S (L) B3318-10S (L)
 B2924-10S (L) B3324-10S (L)

HOOD BASE

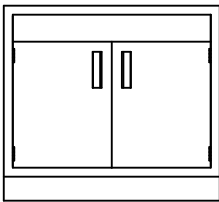
B2912-10P (L)
 B2915-10P (L)
 B2918-10P (L)
 B2924-10P (L)



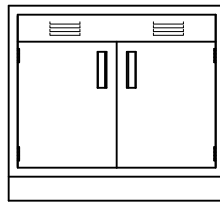
B2915-10S (Lvs) R B3312-10S (Lvs) R
 B2918-10S (Lvs) R B3315-10S (Lvs) R
 B2924-10S (Lvs) R B3318-10S (Lvs) R
 B3324-10S (Lvs) R



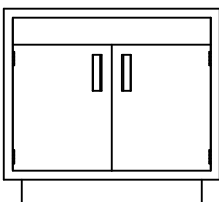
B2915-10S (Lvs) L B3312-10S (Lvs) L
 B2918-10S (Lvs) L B3315-10S (Lvs) L
 B2924-10S (Lvs) L B3318-10S (Lvs) L
 B3324-10S (Lvs) L



B2930-20S B3330-20S
 B2936-20S B3336-20S
 B2942-20S B3342-20S
 B2948-20S B3348-20S
 B2952-20S B3352-20S
 B2958-20S B3358-20S



B2930-20S (Lvs) B3330-20S (Lvs)
 B2936-20S (Lvs) B3336-20S (Lvs)
 B2942-20S (Lvs) B3342-20S (Lvs)
 B2948-20S (Lvs) B3348-20S (Lvs)
 B2952-20S (Lvs) B3352-20S (Lvs)
 B2958-20S (Lvs) B3358-20S (Lvs)



B2952-20SI B3352-20SI
 B2958-20SI B3358-20SI

NOTES:

- Sink cabinets feature sink support channels (welded to the sides) and an open back for service access. Sink supports sold separately
- Sink cabinets do not include a shelf.

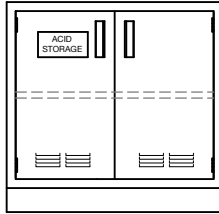


Acid Storage Cabinet

Prime-Aire Acid Storage Cabinets are reinforced steel with a hi-tech performance polymer alloy coating. This reduces the possibility of corrosion.

Notes:

- Standard Acid Cabinets are 18" deep. 22" deep are also available (add -22D suffix).
- Specify left or right (L or R) hinged door for 1 door units.



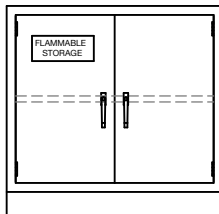
ASB2918-100 (L or R) (1 door unit)	ASB3518-100 (L or R) (1 door unit)
ASB2924-100 (L or R) (1 door unit)	ASB3524-100 (L or R) (1 door unit)
ASB2930-200	ASB3530-200
ASB2936-200	ASB3536-200
ASB2942-200	ASB3542-200
ASB2948-200	ASB3548-200
ASB2952-200	ASB3552-200
ASB2958-200	ASB3558-200

Add Suffix "VK" if Vent Kit is Required

Flammable Storage Cabinet

Notes:

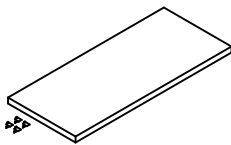
- Standard Flammable Cabinets are 18" deep. 22" deep are also available (add -22D suffix).
- Self-closing doors are available (add SCC Suffix).
- Specify left or right (L or R) hinged door for 1 door units.



FSB2924-100 (L or R) (1 door unit)	FSB3524-100 (L or R) (1 door unit)
FSB2930-200	FSB3530-200
FSB2936-200	FSB3536-200
FSB2942-200	FSB3542-200
FSB2948-200	FSB3548-200
FSB2952-200	FSB3552-200
FSB2958-200	FSB3558-200

Standard Shelf

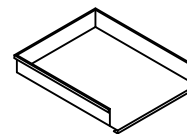
Standard base cabinet shelf with brackets. Available for 29" and 35" high units. Each shelf includes four shelf clips.



BS15
BS18
BS21
BS24
BS30
BS36
BS42
BS48

Pull-Out Shelf

Optional pull-out shelf for base cabinets. Shelf is full extension will ball bearing slides. Note: Cabinet door must be open 90 deg. to allow for extension.

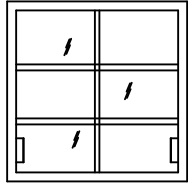


BPS15
BPS18
BPS21
BPS24
BPS30
BPS36
BPS42
BPS48

NOTE: When ordering units with non-standard configurations, drawings must accompany order.

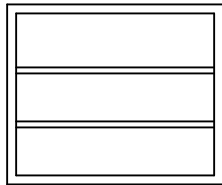


Wall Case Units

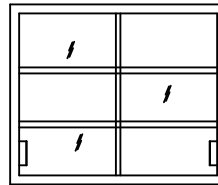


W2430-2GS	W3630-2GS
W2436-2GS	W3636-2GS
W2442-2GS	W3642-2GS
W2448-2GS	W3648-2GS
W3030-2GS	W4830-2GS
W3036-2GS	W4836-2GS
W3042-2GS	W4842-2GS
W3048-2GS	W4848-2GS

Wall Case Units - Double Sided



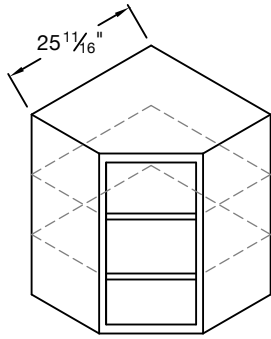
WDS3030-00013 open-2-s
 WDS3036-00013 open-2-s
 WDS3048-00013 open-2-s



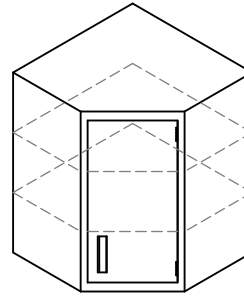
WDS3036-4GS13 open-2-s
 WDS3048-4GS13 open-2-s



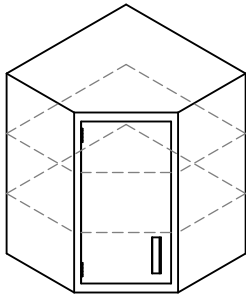
Wall Case Corner Units



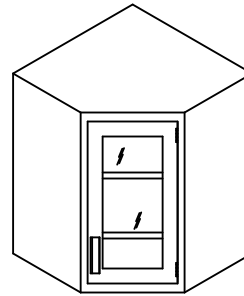
WC3018-000
 WC3618-000
 WC3018-00016
 WC3618-00016



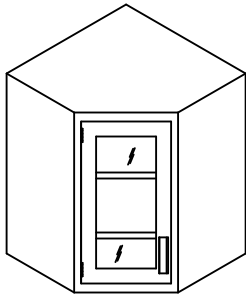
WC3018-1SH(R)
 WC3618-1SH(R)
 WC3018-1SH(R)16
 WC3618-1SH(R)16



WC3018-1SH(L)
 WC3618-1SH(L)
 WC3018-1SH(L)16
 WC3618-1SH(L)16



WC3018-1GH(R)
 WC3618-1GH(R)
 WC3018-1GH(R)16
 WC3618-1GH(R)16



WC3018-1GH(L)
 WC3618-1GH(L)
 WC3018-1GH(L)16
 WC3618-1GH(L)16

NOTE: 16" deep corner wall case dimension is 28-11/16"

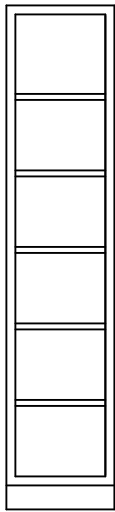
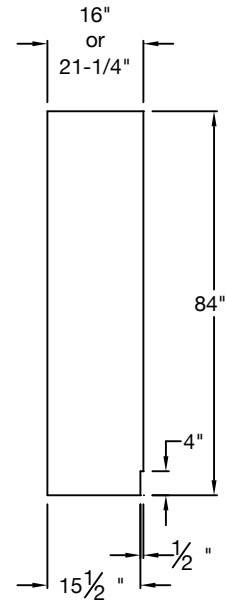


Floor Case Units

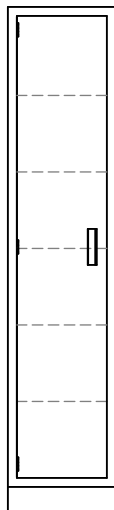
Floor cases are available in widths ranging from 18" to 48". all units are 84" high and are available in either 16" or 21-1/4" depths. Five shelves are standard equipment. Additional shelves are available. On single hinge units, specify (R) or (L) hinge.

Part Numbering System		
Sample:	F8418-2SS16	1 = Floor Case
	12233-4567	2 = Height
		3 = Width
		4 = #Doors
		5 = Material of Doors*
		6 = Type of Doors**
		7 = Depth

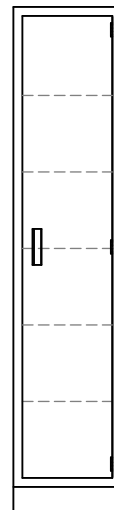
- * Steel, Glass or No Doors (Open)
- ** Hinged, Sliding or Sliding/Framed
- **"R" = Right Hinge Facing Cabinet
- **"L" = Left Hinge Facing Cabinet



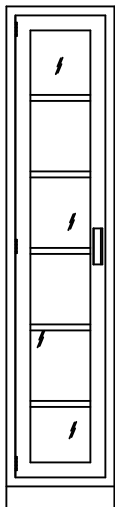
F8418-00016
F8418-00021
F8424-00016
F8424-00021



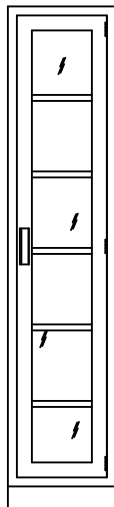
F8418-1SH16(L)
F8418-1SH21(L)
F8424-1SH16(L)
F8424-1SH21(L)



F8418-1SH16(R)
F8418-1SH21(R)
F8424-1SH16(R)
F8424-1SH21(R)



F8418-1GH16(L)
F8418-1GH21(L)
F8424-1GH16(L)
F8424-1GH21(L)

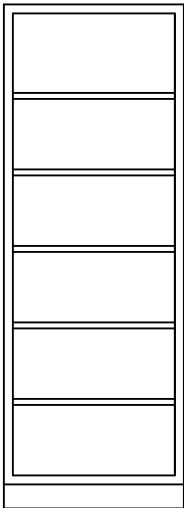


F8418-1GH16(R)
F8418-1GH21(R)
F8424-1GH16(R)
F8424-1GH21(R)

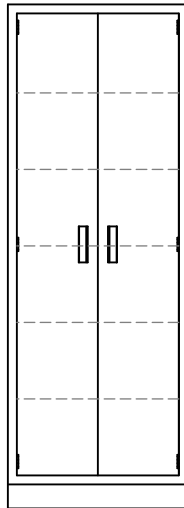


PRIME industries, inc.
www.piiab.com

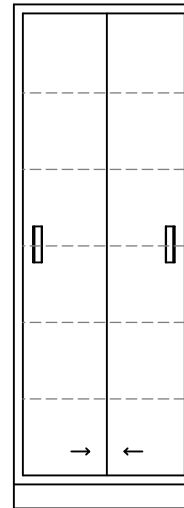
Floor Case Units



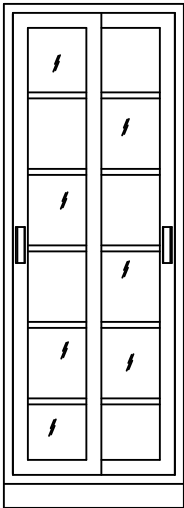
F8430-00016
 F8430-00021
 F8436-00016
 F8436-00021
 F8442-00016
 F8442-00021
 F8448-00016
 F8448-00021



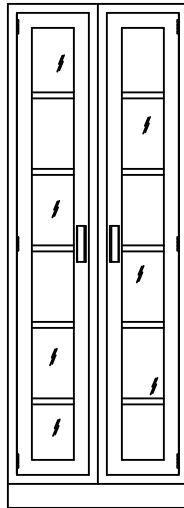
F8430-2SH16
 F8430-2SH21
 F8436-2SH16
 F8436-2SH21
 F8442-2SH16
 F8442-2SH21
 F8448-2SH16
 F8448-2SH21



F8430-2SS16
 F8430-2SS21
 F8436-2SS16
 F8436-2SS21
 F8442-2SS16
 F8442-2SS21
 F8448-2SS16
 F8448-2SS21



F8430-2GSF16
 F8430-2GSF21
 F8436-2GSF16
 F8436-2GSF21
 F8442-2GSF16
 F8442-2GSF21
 F8448-2GSF16
 F8448-2GSF21



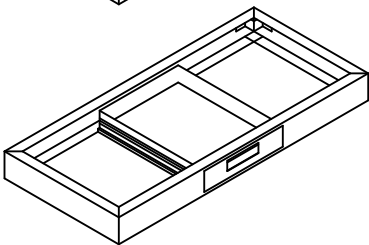
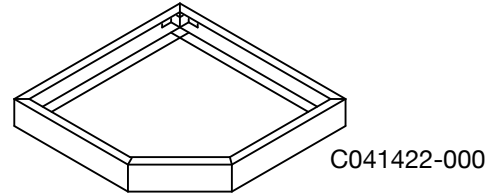
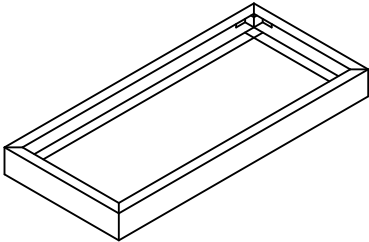
F8430-2GH16
 F8430-2GH21
 F8436-2GH16
 F8436-2GH21
 F8442-2GH16
 F8442-2GH21
 F8448-2GH16
 F8448-2GH21



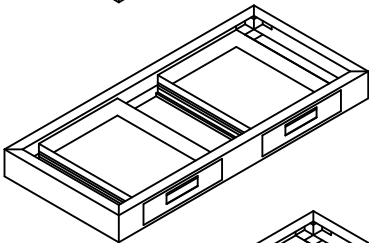
Aprons and Drawer Housings

Sample: Part Numbering System
 A046022-000 1 = Apron 4 = Depth
 1223344-555 2 = Height 5 = # Drawers
 3 = Width

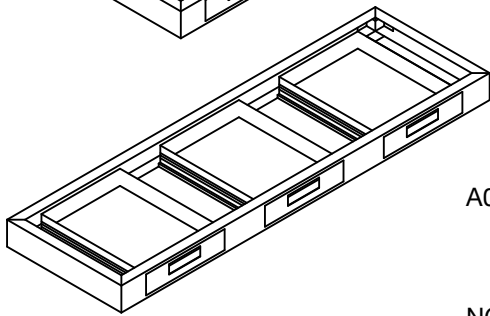
A042422-000 A042428-000
 A043022-000 A043028-000
 A043622-000 A043628-000
 A044222-000 A044228-000
 A044822-000 A044828-000
 A045422-000 A045428-000
 A046022-000 A046028-000
 A046622-000 A046628-000
 A047222-000 A047228-000



A042422-001 A042428-001
 A043022-001 A043028-001
 A043622-001 A043628-001
 A044222-001 A044228-001



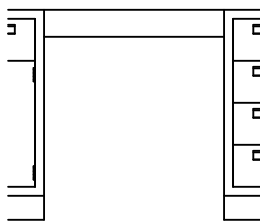
A044222-002 A044228-002
 A044822-002 A044828-002
 A045422-002 A045428-002
 A046022-002 A046028-002
 A046622-002 A046628-002
 A047222-002 A047228-002



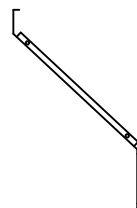
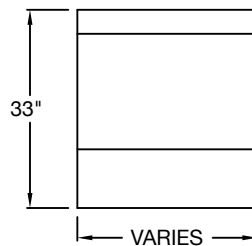
A047222-003 A047228-003

NOTE: Apron Heights Are 4-1/2" High.

Knee Space Rails



KSR0418 KSR0454
 KSR0424 KSR0460
 KSR0430 KSR0466
 KSR0436 KSR0472
 KSR0442 KSR0484
 KSR0448 KSR0496
 KSR0452



KSP3324-SLOPING
 KSP3330-SLOPING
 KSP3336-SLOPING
 KSP3342-SLOPING
 KSP3348-SLOPING

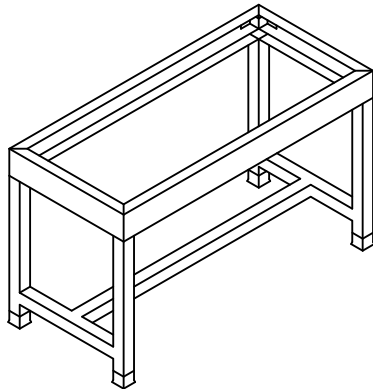
NOTE: When ordering units with non-standard configurations, drawings must accompany order.



PRIME industries, inc.
 www.piiab.com

Utility Tables and Components

NOTE: Utility Tables Do Not Include Countertops.

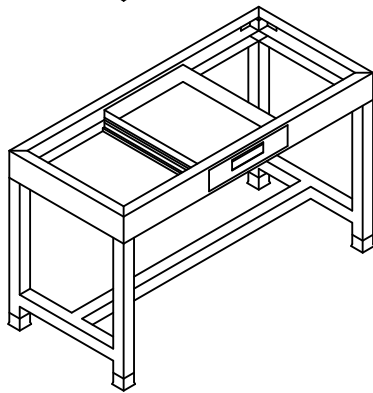


29" HIGH TABLES

<u>22" DEEP</u>	<u>28" DEEP</u>
UT292422-000	UT292428-000
UT293022-000	UT293028-000
UT293622-000	UT293628-000
UT294222-000	UT294228-000
UT294822-000	UT294828-000
UT296022-000	UT296028-000
UT297222-000	UT297228-000

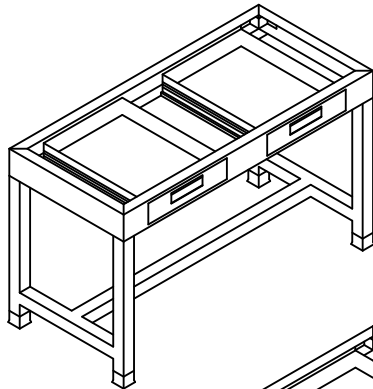
35" HIGH TABLES

<u>22" DEEP</u>	<u>28" DEEP</u>
UT352422-000	UT352428-000
UT353022-000	UT353028-000
UT353622-000	UT353628-000
UT354222-000	UT354228-000
UT354822-000	UT354828-000
UT356022-000	UT356028-000
UT357222-000	UT357228-000



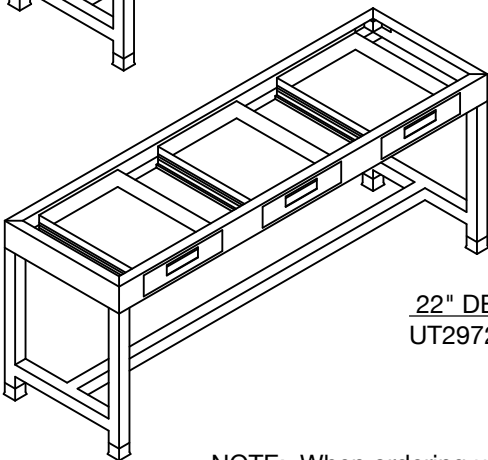
<u>22" DEEP</u>	<u>28" DEEP</u>
UT292422-001	UT292428-001
UT293022-001	UT293028-001
UT293622-001	UT293628-001
UT294222-001	UT294228-001

<u>22" DEEP</u>	<u>28" DEEP</u>
UT352422-001	UT352428-001
UT353022-001	UT353028-001
UT353622-001	UT353628-001
UT354222-001	UT354228-001



<u>22" DEEP</u>	<u>28" DEEP</u>
UT294822-002	UT294828-002
UT296022-002	UT296028-002
UT297222-002	UT297228-002

<u>22" DEEP</u>	<u>28" DEEP</u>
UT354822-002	UT354828-002
UT356022-002	UT356028-002
UT357222-002	UT357228-002



<u>22" DEEP</u>	<u>28" DEEP</u>
UT297222-003	UT297228-003

<u>22" DEEP</u>	<u>28" DEEP</u>
UT357222-003	UT357228-003

NOTE: When ordering units with non-standard configurations, drawings must accompany order.



Accessories

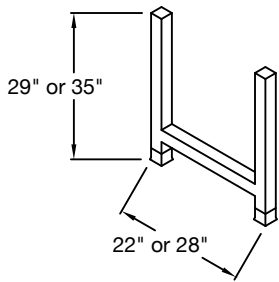
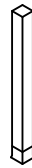


TABLE LEGS

- L29-22
- L35-22
- L29-28
- L35-28



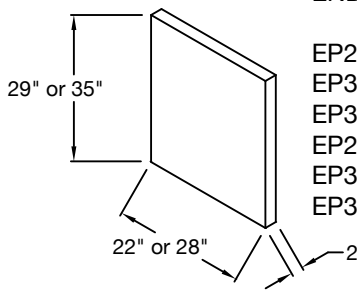
SINGLE LEG

- SL-29
- SL-35



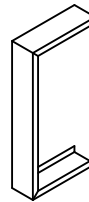
SINGLE LEG WITH PLATE

- SL-29P
- SL-35P



END PEDESTAL

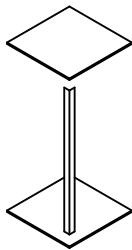
- EP2902-22
- EP3302-22
- EP3502-22
- EP2902-28
- EP3302-28
- EP3502-28



WALL CASE FRONT FILLER

- WCFF24-W
- WCFF30-W
- WCFF36-W
- WCFF48-W

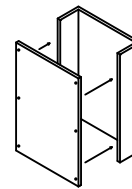
(Specify Width)



WALL CASE CORNER FILLER

- WCCF24
- WCCF30
- WCCF36
- WCCF48

(Specify 13" or 16" depth)
(Vertical angle is 1"x1")

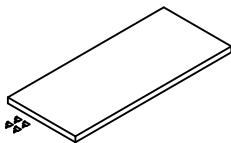


REAGENT SHELF UPRIGHT

- RSU1812
- (18"H x 12"D x 2"W)

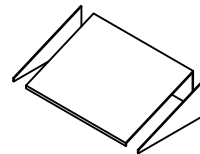
NOTE: Special heights and options available upon request. Drawings and dimensions must accompany order.

WALL / FLOOR CASE SHELF



WALL	FLOOR
WS1813	FS1816
WS2413	FS2416
WS3013	FS3016
WS3613	FS3616
WS4213	FS4216
WS4813	FS4816
WS1816	FS1821
WS2416	FS2421
WS3016	FS3021
WS3616	FS3621
WS4216	FS4221
WS4816	FS4821

SLOPE TOP WITH END CAPS

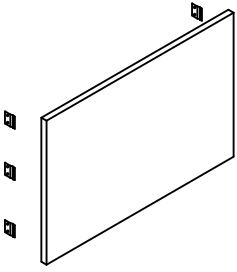


ST13-18	ST21-18
ST13-24	ST21-24
ST13-30	ST21-30
ST13-36	ST21-36
ST13-42	ST21-42
ST13-48	ST21-48
ST16-18	
ST16-24	
ST16-30	
ST16-36	
ST16-42	
ST16-48	



Accessories

KNEE SPACE PANELS (Includes six filler clips)



24" HIGH
 KSP2424
 KSP2430
 KSP2436
 KSP2442
 KSP2448
 KSP2454
 KSP2460
 KSP2466
 KSP2472

29" HIGH
 KSP2924
 KSP2930
 KSP2936
 KSP2942
 KSP2948
 KSP2954
 KSP2960
 KSP2966
 KSP2972

33" HIGH
 KSP3324
 KSP3330
 KSP3336
 KSP3342
 KSP3348
 KSP3354
 KSP3360
 KSP3366
 KSP3372

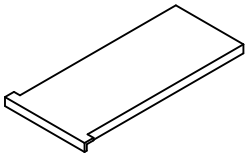
35" HIGH
 KSP3524
 KSP3530
 KSP3536
 KSP3542
 KSP3548
 KSP3554
 KSP3560
 KSP3566
 KSP3572

For use in sit down situation with apron

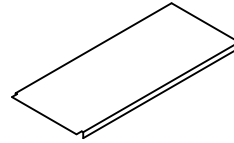
For use in standing situation with apron, or sit down without apron.

For use with ADA height cabinets.

For use in standing situation without apron.



PULL OUT WRITING SHELVES
 BB-15
 BB-18
 BB-21
 BB-24



HORIZONTAL SECURITY PANELS
 SPH15 SPH30
 SPH18 SPH36
 SPH21 SPH42
 SPH24 SPH48

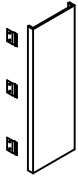


VERTICAL SECURITY PANELS
 VSP33



Filler Panels

Base cabinet fillers are 35", 33" (ADA) high, or 29" high (low base). Other sizes are available upon request.



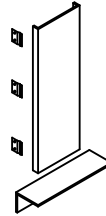
C-FILLER

CF35-8 CF33-8
CF35-14 CF33-14



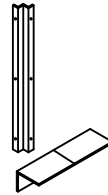
L-FILLER

LF35-1 LF33-1
LF35-7 LF33-7
LF35-11 LF33-11



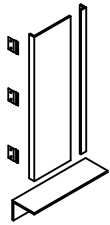
C-FRONT FILLER

FFC35-8 FFC33-8
FFC35-14 FFC33-14



CORNER FILLER

ICF35-1 ICF33-1
ICF35-2 ICF33-2
ICF35-4 ICF33-4



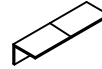
L-FRONT FILLER

FFL35-8 FFL33-8
FFL35-14 FFL33-14



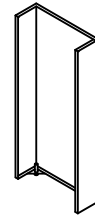
FLOOR CASE FILLER

FFL84-2
FFL84-8



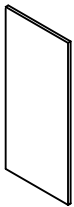
TOE SPACE FILLER

TSF-00



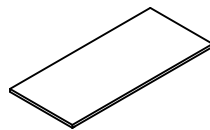
REAR ENCLOSURE PANEL

REP3507-18 REP3307-18
REP3507-24 REP3307-24
REP3507-30 REP3307-30
REP3507-36 REP3307-36
REP3507-42 REP3307-42
REP3507-48 REP3307-48



SOLID BACK PANEL

SBP35-15 SBP33-15
SBP35-18 SBP33-18
SBP35-24 SBP33-24
SBP35-30 SBP33-30
SBP35-36 SBP33-36
SBP35-42 SBP33-42
SBP35-48 SBP33-48



SOLID METAL TOP

STP15-22
STP18-22
STP24-22
STP30-22
STP36-22
STP42-22
STP48-22

* Last number(s) in filler designation indicates width of filler assembly.



PRIME industries, inc.
www.piiab.com

Fume Hoods

The name PRIME-AIRE has long been synonymous with quality and longevity. Our newly redesigned fume hood line is a proud example of this reputation. Over 50 years of experience combined with state of the art engineering, manufacturing and testing facilities provide you with a fume hood unsurpassed in quality and performance.

DESIGN

The design of our fume hood line is founded on three basic principles: safety, flexibility and aesthetics.

SAFETY

Safety should be the number one concern when choosing a fume hood. That's why our hoods are tested and certified in accordance with the Ashrae method of testing performance of laboratory fume hoods.

AESTHETICS

Our quality, pride and craftsmanship will insure that your PRIME-AIRE fume hood will be a handsome center piece in your laboratory for years to come.

FUME HOOD STYLES INCLUDE:

Airfoil Bypass	Low Bench
Variable Volume	Walk-in
Add Air	Thin Wall
ADA	Demonstration
Radio Isotope	Portable
Perchloric Acid	Spray Booth

FLEXIBILITY

Construction of our fume hood begins with a heavy duty internal framework. This universal framework is the foundation for a variety of standard and optional features.

These features include:

- Chemical resistant interiors of resin-chem, PVC or stainless steel.
- PVC or stainless steel sash guides.
- Vertical, horizontal or combination sashes in a variety of materials.
- Easy access for service fixture installation.
- Manual or remote baffle adjustment.
- Fluorescent light fixture.
- Optional factory installation of service fixtures.

The flexibility of our design will allow you to select standard options that will met the requirements of your application.

CATALOG

For a complete fume hood catalog contact us direct at:

PRIME Industries, Inc.

4611 Main Street

Lisle, IL 60532

Phone: 630-725-9200

Fax: 630-725-9201

Email: sales@piilab.com

www.piilab.com





PRIME industries, inc.



The PRIME Commitment To Excellence

In all we do... for all we serve.

Back in 1973, when PRIME industries was established as manufacturers and fabricators of Epoxy Resin countertops and accessories, several critical decisions were made. They proved to be the fundamental reason for a growth curve which, by anyone's standards, is an outstanding success.

By far, the most important of these decisions was drawn from the most proven business principals: An unswerving commitment to giving our clients the finest quality products at the most reasonable price consistent with a professional level of service.

During more than 40 years of uninterrupted growth, PRIME has steadily defined the discipline of anticipating and serving our customer's needs, both present and future.

It is increasingly apparent that there is a growing demand for specialization in the marketplace for laboratory accessories and components. In response, we are proud to introduce our newly expanded accessory package which has been specifically designed as "a single PRIME source" for the agent, thus freeing up his or her time to concentrate on selling rather than shopping.

We look forward to continuing to supply your laboratory requirements, and stand ready to help with any particular situation. Excellent service is part of our commitment to you. Your business is important to us.



PRIME industries, inc.
www.piilab.com

Metal Laboratory Systems



In all we do . . . for all we serve.

PRIME industries, inc.
4611 Main Street
Lisle, Illinois 60532

Office: (630) 725-9200
Fax: (630) 725-9201
sales@piilab.com