



***PRIME industries, inc.***



***Sail Into The Future  
With Prime***

# **PRIME** industries inc.

## EPOXY RESIN IS...

- Modified epoxy resins with inert fillers cured for several hours to produce excellent physical, chemical and heat resistance.
- Epoxy resin formulation clear through and not dependent on surface coatings for durability and resistance.
- Resistant to most organic and inorganic chemicals, and is non-toxic.
- Resistant to mechanical and thermal shock.
- Economical due to special formulation procedures that keep costs at the level of most conventional laboratory tops.

## WHY EPOXY RESIN?

Because of the natural resistance to corrosion of epoxy, the industry has found it superior to any other top material for laboratory work. **PRIME** has gone that extra step to not only provide the excellent material, but also the added responsibility of complete fabrication. **PRIME** will accommodate your every epoxy resin countertop need, from initial budgeting, through estimating and bidding, then molding and fabricating to your shop drawings and details.

Tops are custom fabricated from detailed shop drawings, including sink cutouts, drillings and field dimension cuts. Tolerances of dimensions are held to a minimum and checked closely before leaving the factory. Due to the nature of epoxy resin, slight variations may develop from piece to piece, and we therefore advise careful aligning of cabinets underneath, shimming of tops, and never interchanging similar pieces. We recommend diamond tools be used for field modification where necessary. In most cases, epoxy cement can be used to bind tops to cabinets or frames.

Available in black, four shades of gray, white, blue and green



FLAT TOPS



FLAT TOPS WITH FIELD APPLIED BACKSPLASH



MARINE EDGE TOPS



MARINE EDGE TOPS WITH FIELD APPLIED BACKSPLASH



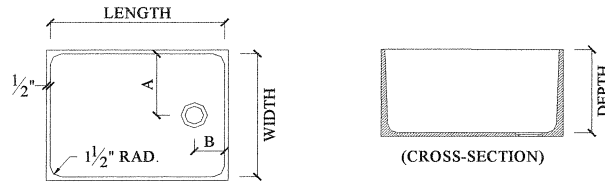
FLAT TOPS WITH INTEGRAL BACKSPLASH



MARINE EDGE TOPS WITH INTEGRAL BACKSPLASH

Dished Fume Hood Decks also available in virtually every size

## Undermount Sinks

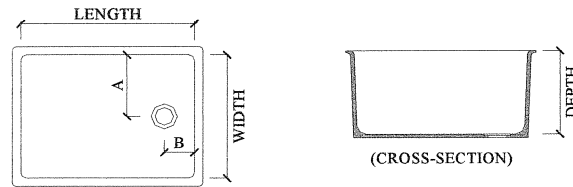


Sink No.	Length	Width	Depth	Net Weight	Outlet Location	A	B
P 02	12	6	6	16	Center	3	6
P 03C	12	8	6	17	Center	4	6
P 04C	12	6	7	18	Center	3	6
P 05C	14	10	6	22	Center	5	7
P 05E	14	10	6	22	End	5	3 1/2
P 08C	12	12	8	25	Center	6	6
P 10	16	8	7	22	End	4	3 1/2
P 10C	16	8	7	22	Center	4	8
P 15	16	12	8	34	End	6	3 1/2
P 15C	16	12	8	34	Center	6	8
P 16	15 3/4	13 3/4	7 7/8	36	Center	6 7/8	7 7/8
P 20	16	16	7 1/2	39	Corner	4 1/4	4 1/4
P 22	18	6 1/2	6	22	Center	3 1/4	9
P 23C	16	16	12	54	Center	8	8
P 24	18	14	10 1/2	38	Center	7	9
P 25	18	15	8	40	Corner	3 1/2	3 1/2
P 30	18	15	11	54	Corner	3 1/2	3 1/2
P 30C	18	15	11	49	Center	7.5	9
P 31	18 3/8	17 5/8	16	81	Corner	4 1/4	5 3/4
P 32	18 3/4	18	21 1/8	82	Corner	4 1/4	5 7/8
P 33C	21	17	10	57	Center	8 1/2	10 1/2
P 33E	21	17	10	57	End	8 1/2	4 1/2
P 34	20	20	12	55	Center	10	10
P 35	21	18	10	61	End	9	4 1/2
P 40	21 1/2	15 1/2	7	47	Corner	4	4
P 43	22 1/2	10 1/2	7 3/8	35	Center	5 1/4	11 1/4
P 45	21 1/2	15 1/2	11	64	Corner	4	4
P 49	22	14 1/4	10 5/8	59	Corner	10 3/4	4 1/4
P 50	24	16	8	54	End	8	4
P 50C	24	16	8	54	Center	8	12
P 51	24	16	10	62	End	8	4
P 52	24	18	10 3/4	62	End	9	4
P 53	24 1/16	18 1/8	16 3/4	88	End	9 1/4	4 1/4
P 54	23	21	19 1/8	96	Corner	6 1/2	7
P 55	25	15	10	60	Corner	3 1/2	3 1/2
P 56	24	16	12	63	Center	8	12
P 58	27 3/4	14 3/4	8	56	End	7 1/2	11 1/2
P 59	28	15	12	70	End	7 1/2	11 1/2
P 60E	28	20	8 7/8	83	End	6 1/2	14
P 61	30	18	18	141	Center	9	15
P 62	31	21	10	89	Center	10 1/2	15 1/2
P 63	31	17	10	78	End	8 1/2	4
P 64	31	21	12	95	Center	10 1/2	15 1/2
P 65	35 1/2	19 1/2	10	94	Center	9 3/4	17 3/4
P 66	35 3/4	19 3/4	12	110	Center	9 7/8	17 7/8
P 67	36	20	16	118	Center	10	18
P 70	42 3/4	14 3/4	8	95	Center	7 3/8	21 3/8
P 71	43	15	11	108	Center	7 1/2	21 1/2
P 72	43 1/4	15 1/4	16	179	Center	7 5/8	21 5/8
P 73	38	21	19	150	Corner	15 7/8	5 1/4
P 75	42	20	10	126	Center	10	21
P 76	42 1/8	20	12	162	Center	10	21 1/8
P 81E	48 7/8	24 5/8	5 5/8	100	End	12 1/4	4
PS 5	12" Diameter		7 1/2	22	Center	6	6
PS 10C	19 1/2" Diameter		8 1/2	37	Center	9 3/4	9 3/4
H 20C	30	26	6 7/8	82	Center	Hexagonal Sink	

Sink I.D. can vary 1/4" - Double Bowl Sinks are obtained by joining two sinks together.



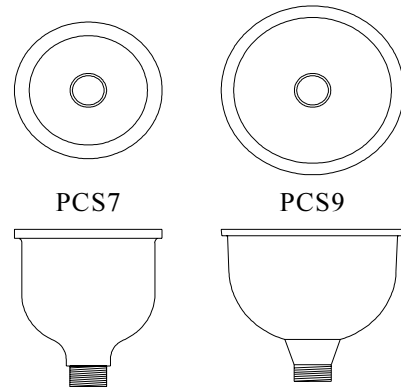
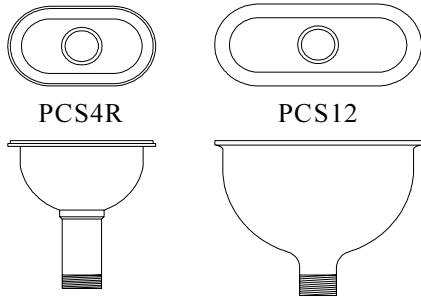
## Lipped/Drop-In Sinks



Sink No.	Length	Width	Depth	Net Weight	Outlet Location	A	B
PL01	9	6	6	12	Center	3	4 1/2
PL03	12	8	6	15	Center	4	6
PL05	14	10	6 1/4	22	Corner	3 1/2	3 1/2
PL05C	14	10	6	22	Center	5	7
PL05ADA	14	10	5	18	Corner	3 1/2	3 1/2
PL06	12	12	12	34	Center	6	6
PL07ADA	14	14	5	24	Corner	3 1/2	3 1/2
PL08	15	8	6	25	Corner	4 1/2	4 1/2
PL09	15	8	10 7/8	25	Corner	3 1/2	3 1/2
PL10	16	8	7	22	End	4	3 1/2
PL10C	16	8	7	22	Center	4	8
PL15	16	12	8	34	Corner	3 1/2	3 1/2
PL15C	16	12	8	35	Center	6	8
PL19	16	16	9 5/8	42	Corner	3 1/2	3 1/2
PL20	16	16	7 1/2	38	Corner	4 1/4	4 1/4
PL21	16	16	11 7/8	47	Corner	5	5
PL22	18	6 1/2	6	27	Center	3 1/4	9
PL24	18	14	10 1/2	38	Center	7 1/4	9
PL25	18	15	8	42	Corner	3 1/2	3 1/2
PL25ADA	18	15	5	42	Corner	3 1/2	3 1/2
PL26ADA	18	15	5/11	39	Corner	5 1/2	4 1/2
PL30	18	15	11	45	Corner	4 1/2	4 1/2
PL30C	18	15	11	50	Center	7 1/2	9
PL32	18	15	15 3/4	58	Corner	5	5
PL33	21	17	10	59	Corner	3 1/2	3 1/2
PL33E	21	17	10	60	End	8 1/2	4 1/2
PL45	21 1/2	15 1/2	11	64	Corner	4 1/2	4 1/2
PL50	24	16	8 1/4	54	Corner	3 1/2	3 1/2
PL50C	24	16	8	48	Center	8	12
PL51	24	16	9 5/8	60	Corner	3 1/2	3 1/2
PL52	24	18	11	77	Corner	4 1/2	4 1/2
PL52E	24	18	10 3/4	65	End	9	4
PL54	25	15	8	45	Corner	3 1/2	3 1/2
PL55	25	15	10	60	Corner	3 1/2	3 1/2
PL55ADA	25	15	5	55	Corner	4	4
PL57	25	15	13 5/8	71	Corner	3 1/2	3 1/2
PL58	25	15	17 3/4	79	Corner	3 1/2	3 1/2
PL59	28	15	11 3/4	61	Corner	4 1/2	4 1/2
PL59E	28	15	12	72	End	7 1/2	10
PL61	30	16	17 3/4	94	Corner	7 1/2	4 1/2
PL65C	35 1/2	19 1/2	9 3/4	98	Center	9 3/4	17 3/4
PL68	30	16	10	70	End	8	4 3/4
PL69	30	16	18	90	End	8	5 3/4
PL100	22 1/2	15 1/2	5	29	Back	Octagonal Sink	
PL200	30 7/8	26 3/4	7	64	End	Hexagonal Sink	
PLH20C	30	26	7	82	Center	Hexagonal Sink	
PLRS05	12" Diameter		7 1/2	22	Center	6	6
PLRS10	10" Diameter		7 7/8	14	Center	5	5

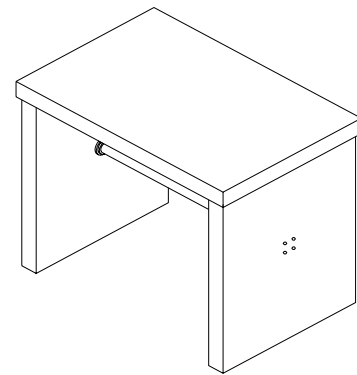
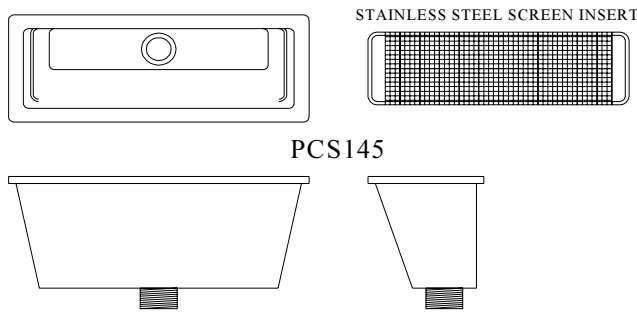
Sink I.D. can vary 1/4" - Double Bowl Sinks are obtained by joining two sinks together.

## Cupsinks & Accessories



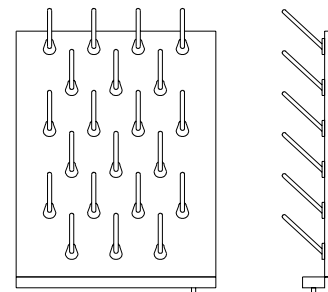
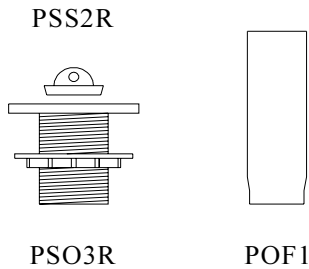
Cupsink No.	Weight	Inside Dimensions
PCS4R	3 lbs.	3" x 6" Oval
PCS12	4 lbs.	3" x 9" Oval

Cupsink No.	Weight	Inside Dimensions
PCS7	5 lbs.	3" x 6" Oval
PCS9	4 lbs.	3" x 9" Oval



Cupsink No.	Weight	Inside Dimensions
PCS145	10 lbs.	13 3/4" x 4 1/2 x 5 1/2

Balance Table	Weight	Dimensions
PBT36	450 lbs.	36"w x 24"d x 30"h



### Sink Accessories

Accessory No.	Description
PSO3R	Sink Outlet
PSS2R	Stopper
POF1	Overflow (4", 6", 8", 10")

### Epoxy Resin Pegboards

Standard	Dimensions	# of Pegs
PGBD2430	24"w x 30"h	39
PGBD3030	30"w x 30"h	46
PGBD3630	36"w x 30"h	60

Non-standard sizes available  
Trough available on request

# **PRIME industries inc.**

## Specifications for Modified Epoxy Resin

**PRIME** Epoxy Resin products are generally specified in sections 11600 and 12345 of most specifications.

**PRIME** Epoxy Resin Work Surfaces shall be 3/4" (19mm), 1" (25mm) or 1 1/4" (32mm) thick. Work surfaces shall be monolithic and molded from a modified epoxy resin. Work surfaces shall have a smooth, non-glare finish. Work surfaces shall be installed with a uniform 1" (25mm) overhang on the front and exposed ends. Work surfaces shall have a continuous drip groove 1/8" (3mm) wide, 1/8" (3mm) deep on the underside of all exposed edges. All exposed edges shall be finished with a 1/8" (3mm) bevel or 3/16" (4.7mm) radius. Work surfaces shall be provided in longest practical lengths to minimize joints.

Backsplashes shall be of the same material, thickness and finish as the work surface. Backsplashes are to be supplied loose for field application to assure proper fit at walls.

Sinks shall be selected from **PRIME's** standard sizes. All sinks shall be molded in one piece with corners coved and bottom sloped to the outlet. All sinks shall include **PRIME's** poly-resin PSO3R 1 1/2" (38mm) outlet, POF1 overflow and PSS2R stopper. Sinks, outlets and stoppers are to be supplied loose for field application.

Fume Hood Tops shall be selected from **PRIME's** standard sizes. Fume hood tops shall be dished/indented a minimum of 1/4" (6mm) to contain spills unless otherwise specified on architectural drawings.

Color of work surfaces, sinks, accessories and fume hood tops shall be black, gray or white.

### PHYSICAL PROPERTIES

Flexural strength	ASTM-Method D790
Compressive Strength	ASTM-Method D695
Hardness, Rockwell M	ASTM-Method D785
Density GR/CC	ASTM-Method D792
Water Absorption	ASTM-Method D570
Flame Test	ASTM-Method D635

hot crucible was transferred to the **PRIME** work surface and allowed to cool to room temperature. Upon removal of the cooled crucible, there was no effect to the **PRIME** work surface: no blisters, cracks or any breakdown of the work surface whatsoever.

The **PRIME** work surface showed no blistering or cracking when exposed to direct flame. An overturned 3/8" (9.525mm) Bunsen burner, adjusted to a quiet flame with a 1 1/2" (38mm) inner cone, was allowed to remain on the work surface for a period of five (5) minutes with no effect.

### HEAT RESISTANCE

A high form porcelain crucible (size: 15ml capacity) was heated over a Bunsen burner until the crucible bottom obtained a dull, red heat. Immediately the

### CHEMICAL RESISTANCE

Tops shall be highly resistant to the normally used laboratory reagents. The following is the test that was performed at an independent test laboratory:

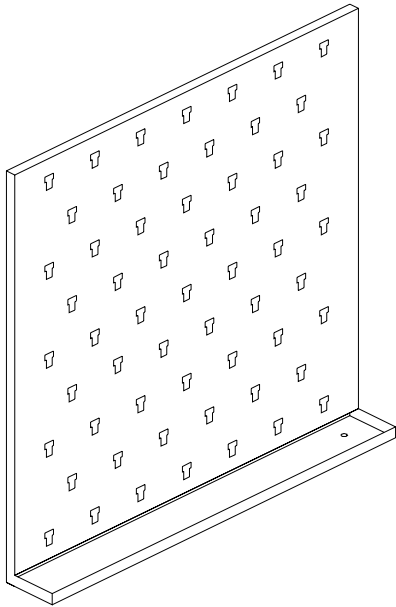
With non-volatile reagents, approximately 1/2cc of the reagent was applied to the surface tested. The reagent was covered with a wide mouth bottle to retard evaporation. With volatile reagents, a 1" (25mm) ball of cotton was saturated with the reagent and placed on the surface tested, then covered with a wide mouth bottle. All surface test spots were wet with reagent for a 16 hour period. After exposure, the surface was washed with soap and water, rinsed and dried before examination and evaluation.

Acetic Acid, 5%  
Acetic Acid, Glacial  
Acetone  
Ammonium Hydroxide, 28%  
Aniline Oil  
Benzene  
Carbon Tetrachloride  
Citric Acid, 10%  
Cottonseed Oil  
Diethyl Ether  
Dimethyl Formamide  
Distilled Water  
Detergent Solution  
Ethyl Alcohol, 95%  
Ethyl Alcohol, 50%

Ethylene Dichloride (Dichloroethane)  
Heptane  
Hydrochloric Acid, 37%  
Hydrochloric Acid, 20%  
Hydrogen Peroxide, 20%  
Hydrogen Peroxide, 3%  
Iso-Octane  
Kerosene  
Methyl Alcohol  
Mineral Oil  
Nitric Acid, 70%  
Nitric Acid, 10%  
Oleic Acid  
Olive Oil

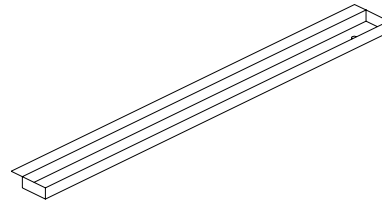
Phenol  
Soap Solution, 1%  
Sodium Carbonate, 20%  
Sodium Carbonate, 2%  
Sodium Chloride, 10%  
Sodium Hydroxide, 10%  
Sodium Hypochlorite, 5%  
Sulfuric Acid, 60%  
Sulfuric Acid, 33%  
Toluene  
Transformer Oil  
Turpentine  
100 Hour Soaked Cellulose Sponge Test  
Boiling Water, Trickling, 5 Minutes

**Stainless Steel Items and Accessories by INTER DYNE**  
*s y s t e m s , i n c .*



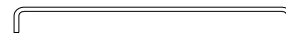
### **Pegboards**

Standard Sizes:  
18" wide - 48" wide  
18" high - 36" high



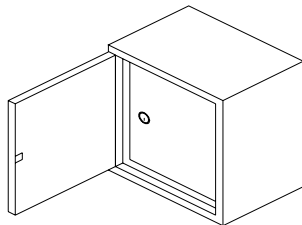
### **Pegboard Troughs**

Standard Sizes:  
2" deep and 4" deep  
18" wide - 48" wide

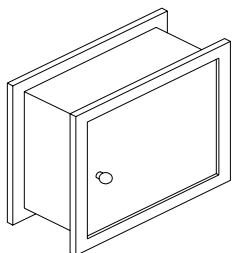


### **Seismic Lips/Rails**

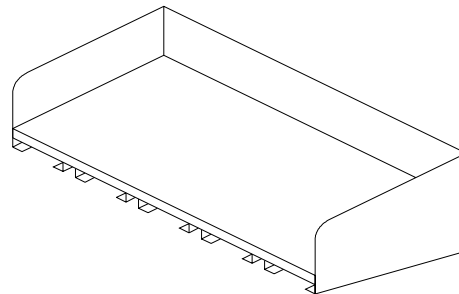
Standard Sizes:  
11" wide and 14" wide



### **Nar-Lock Narcotics Cabinets**

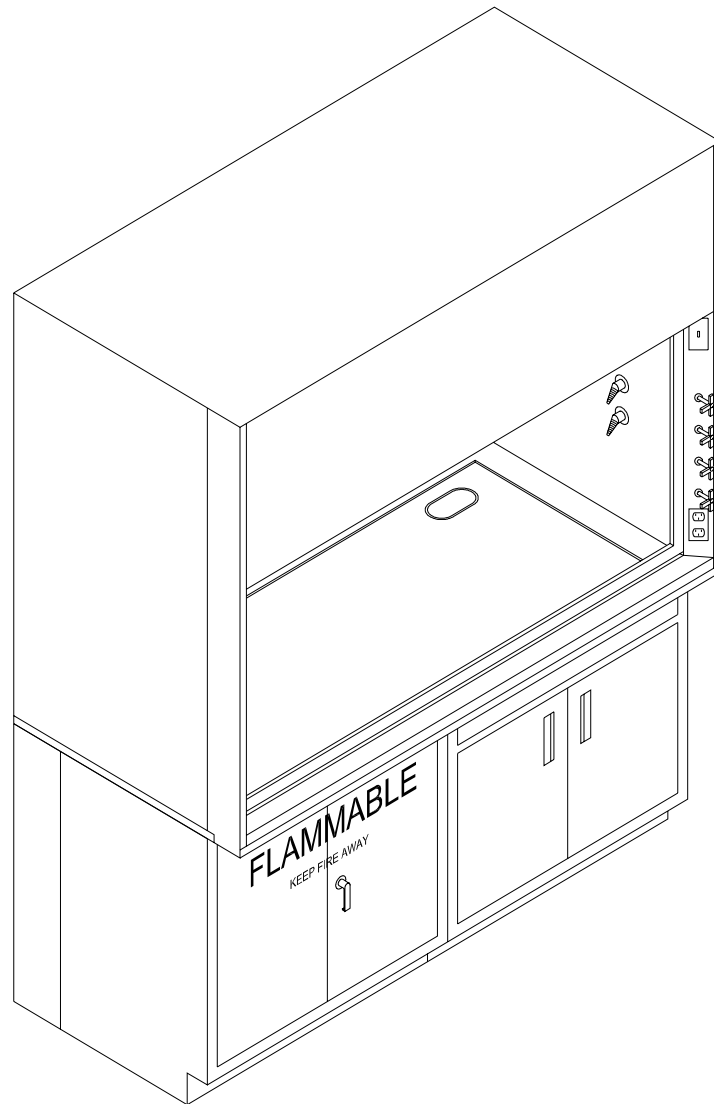


### **Specimen Pass Thru Boxes**



### **Utility Shelves**

Standard Sizes:  
18" wide - 48" wide  
12" deep or 16" deep  
Available with or without Graduate Rack



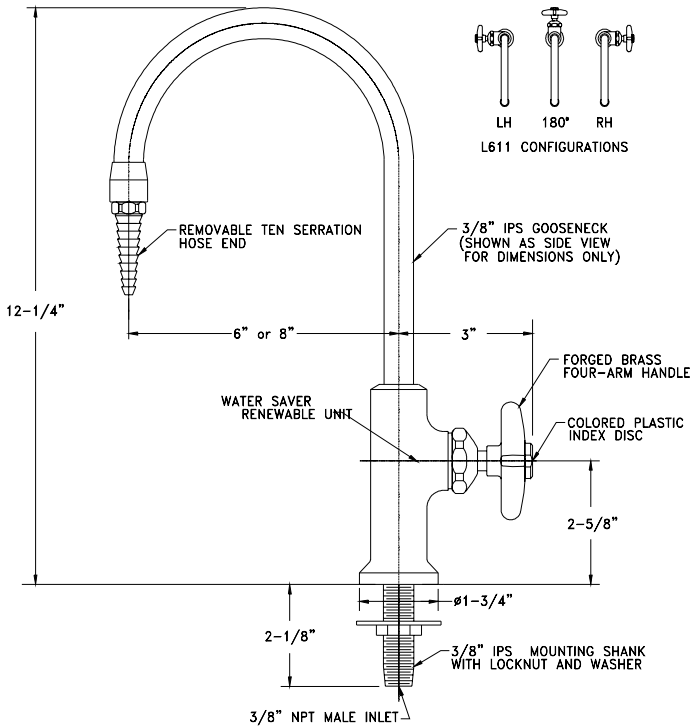
**PRIME** industries offers the most wanted, highly rated countertops, faucets and laboratory equipment, and now the new laboratory fume hood line: **PRIME-AIRE** by **PRIME**. Over 50 years of experience, combined with state of the art engineering and testing facilities, provide you with a fume hood unsurpassed in quality and performance.

Available in standard widths and various configurations such as, Bypass, Perchloric, Radio Isotope, Add Air, Variable Volume, Walk-In, ADA, HEPA Filter, Ductless and many others.

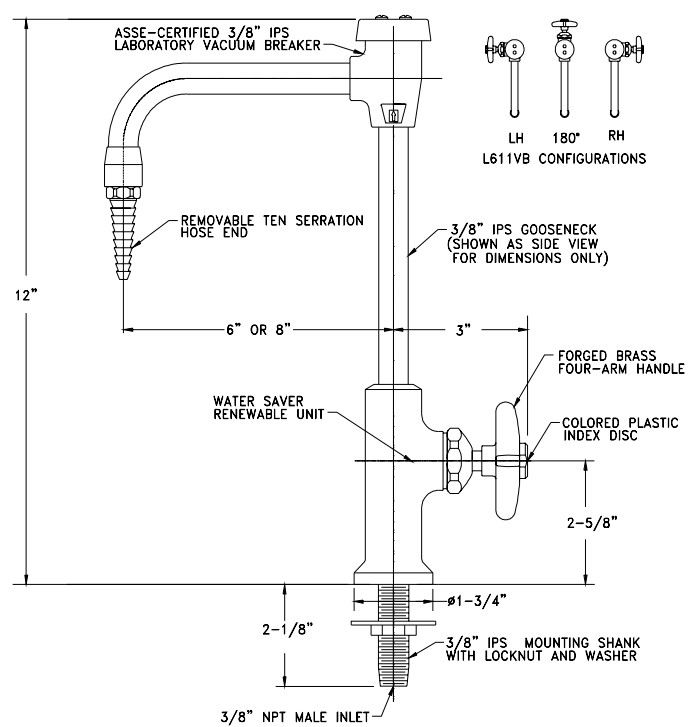


# **PRIME industries inc.**

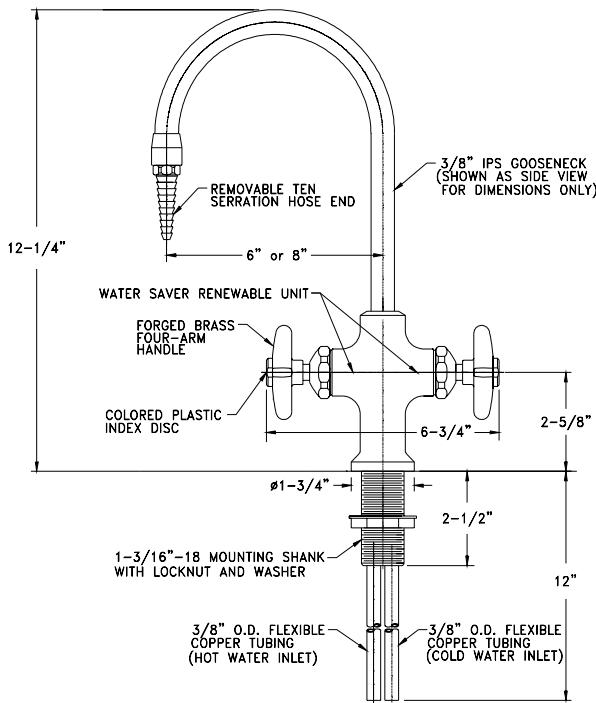
**L611**  
LABORATORY SINGLE FAUCET, DECK MOUNTED, 6" RIGID GOOSENECK  
**L612**  
SAME AS ABOVE EXCEPT WITH SWING GOOSENECK



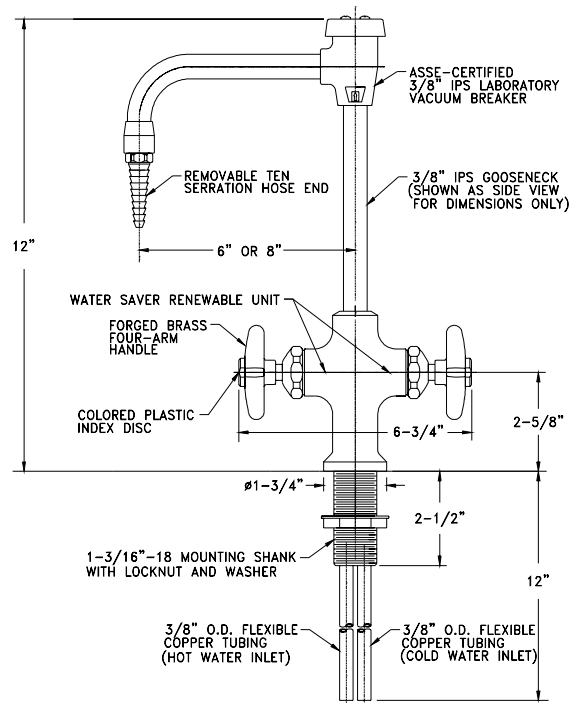
**L611VB**  
LABORATORY SINGLE FAUCET, DECK MOUNT, 6" RIGID VACUUM BREAKER G'NECK  
**L612VB**  
SAME AS ABOVE EXCEPT WITH SWING VACUUM BREAKER GOOSENECK



**L411**  
LABORATORY MIXING FAUCET, DECK MOUNTED, 6" RIGID GOOSENECK  
**L412**  
SAME AS ABOVE EXCEPT WITH SWING GOOSENECK



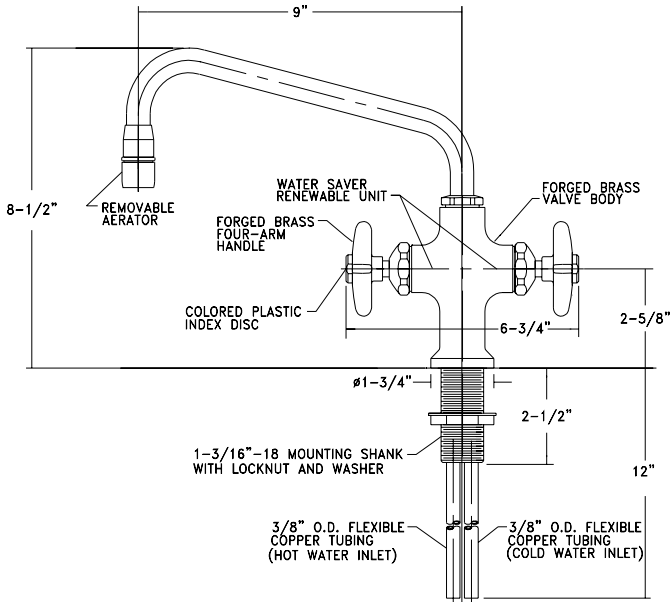
**L411VB**  
LABORATORY MIXING FAUCET, DECK MOUNT, 6" RIGID VACUUM BREAKER G'NECK  
**L412VB**  
SAME AS ABOVE EXCEPT WITH SWING VACUUM BREAKER GOOSENECK



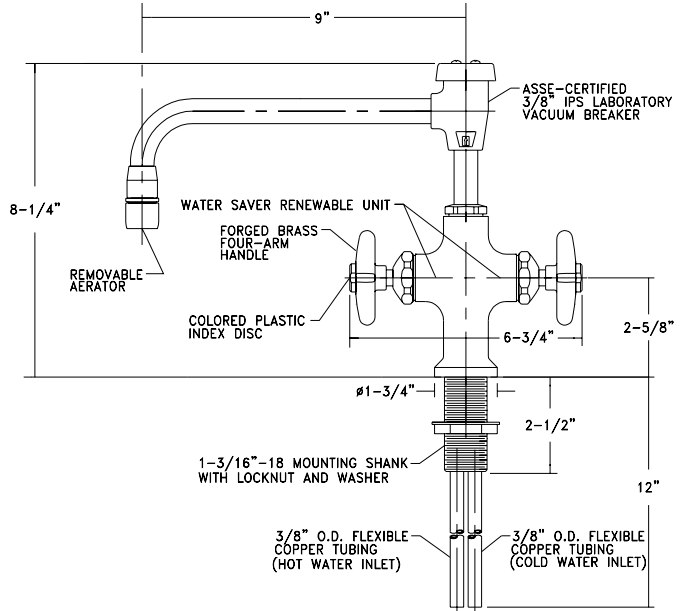
**All items on this page in stock and available for immediate shipment**

# **PRIME industries inc.**

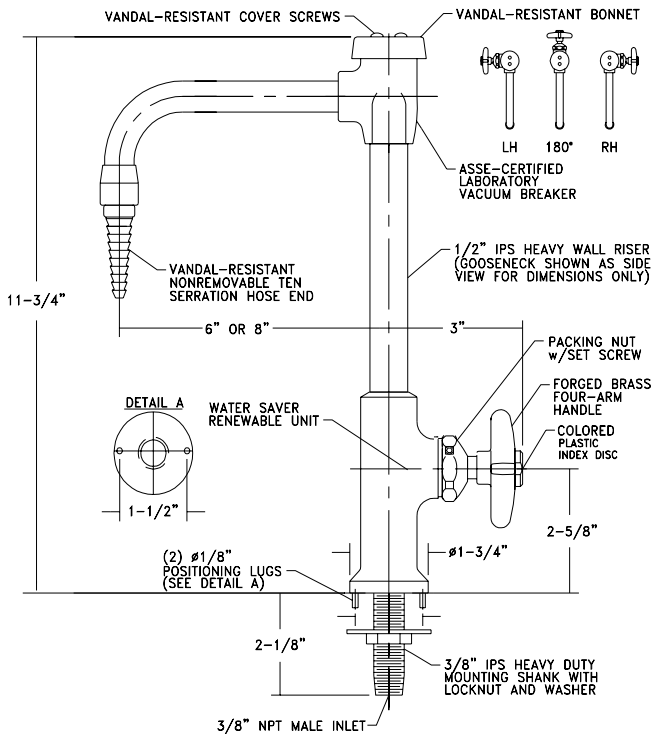
**L410**  
LABORATORY MIXING FAUCET, DECK MOUNTED, 9" SWING SPOUT



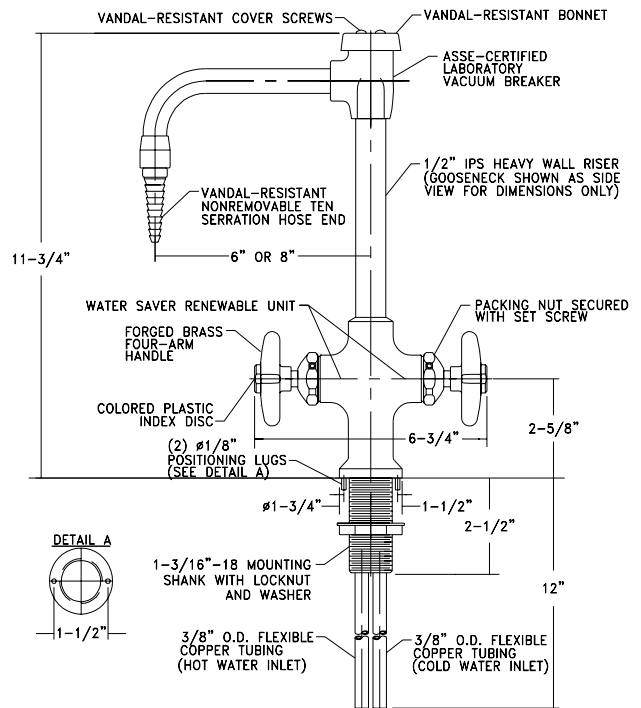
**L410VB**  
LABORATORY MIXING FAUCET, DECK MOUNT, 9" SWING VACUUM BREAKER SPOUT



**VR611VB**  
VANDAL-RESISTANT LABORATORY SINGLE FAUCET, DECK MOUNTED, 6" RIGID VACUUM BREAKER GOOSENECK



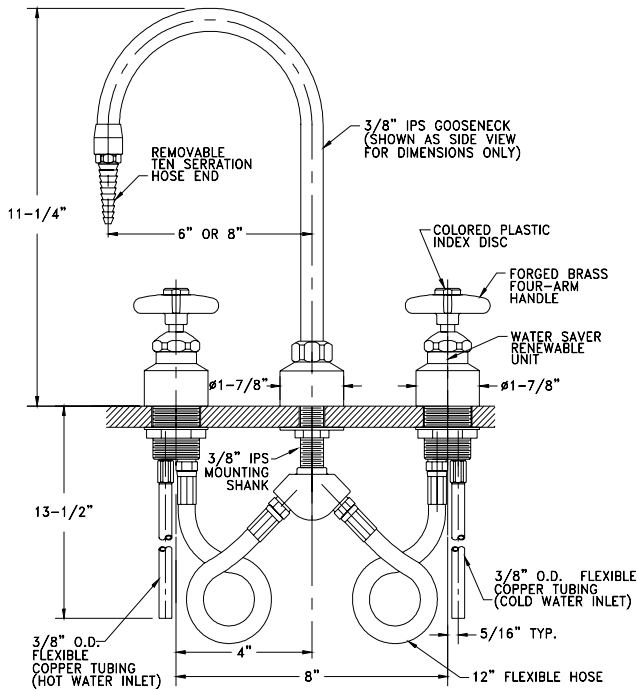
**VR411VB**  
VANDAL-RESISTANT LABORATORY MIXING FAUCET, DECK MOUNTED, 6" RIGID VACUUM BREAKER GOOSENECK



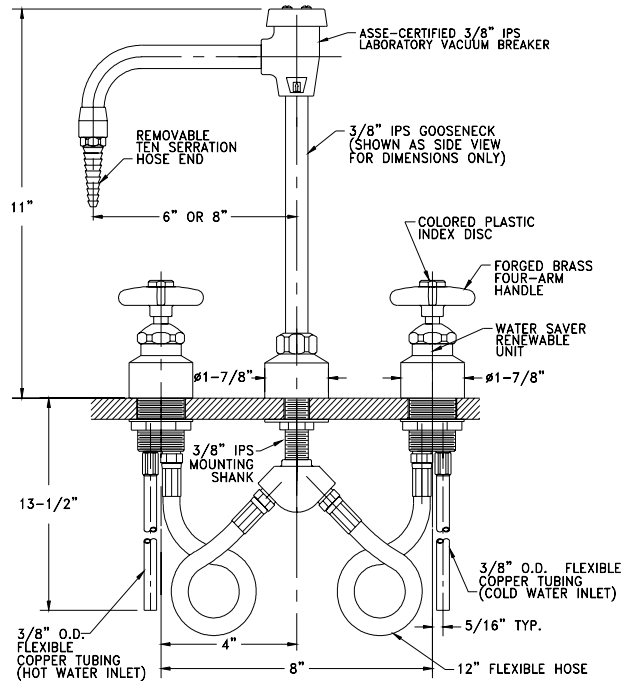
**All items on this page in stock and available for immediate shipment**

# PRIME industries inc.

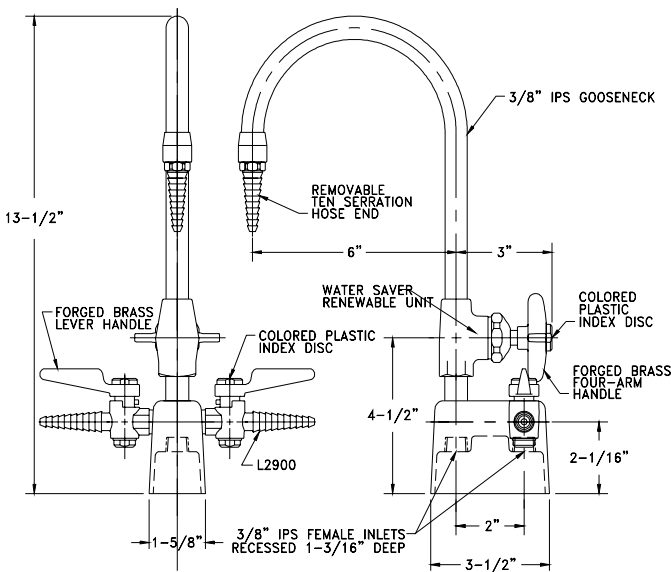
**L2214**  
LABORATORY MIXING FAUCET, DECK MOUNTED WITH 6" RIGID/SWING GOOSENECK



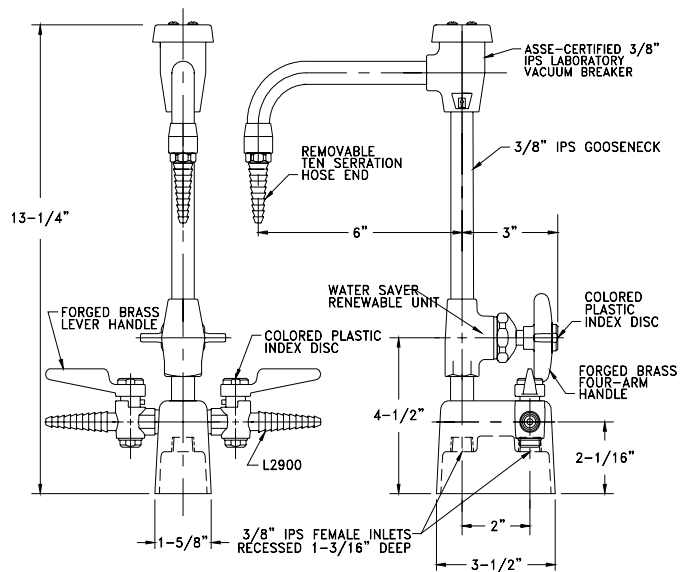
**L2214VB**  
LABORATORY MIXING FAUCET, DECK MOUNTED WITH 6" RIGID/SWING VACUUM BREAKER GOOSENECK



**L66WS**  
DECK MOUNTED DOUBLE SERVICE FIXTURE FOR COLD WATER AND GAS, AIR OR VACUUM WITH MOUNTING SHANKS



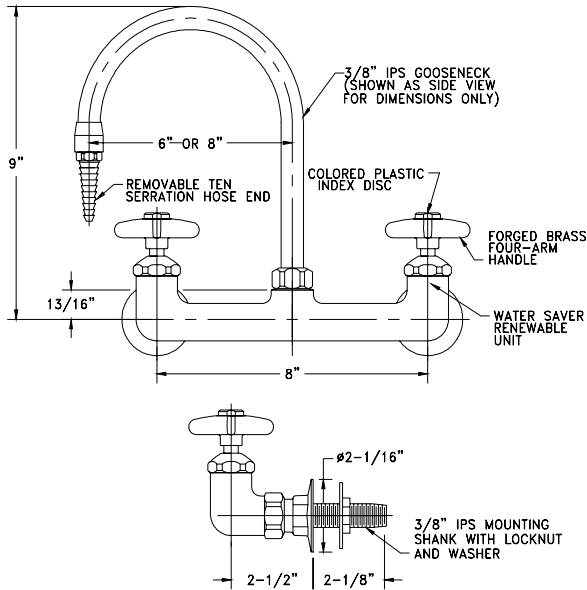
**L66VB-WS**  
DECK MOUNTED DOUBLE SERVICE FIXTURE FOR COLD WATER AND GAS, AIR OR VACUUM WITH MOUNTING SHANKS AND VACUUM BREAKER GOOSENECK



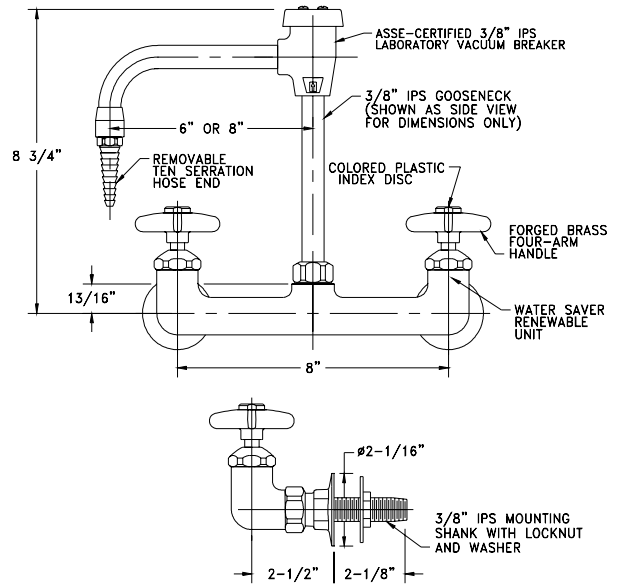
**All items on this page in stock and available for immediate shipment**

# **PRIME industries inc.**

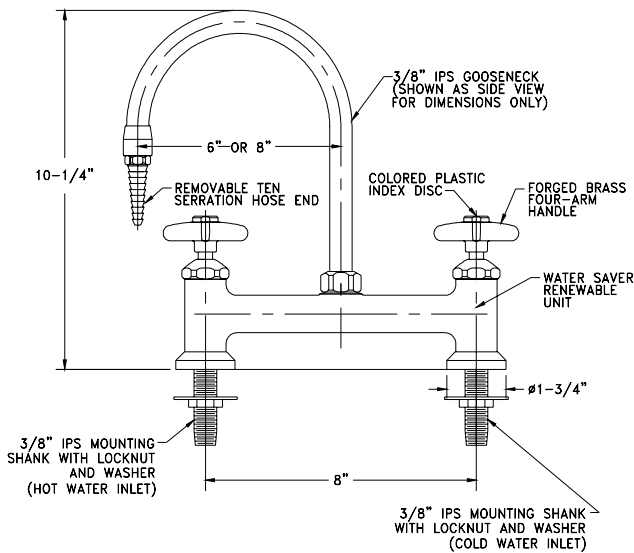
**L514WS**  
 PANEL MOUNTED MIXING FAUCET WITH 6" RIGID/SWING GOOSENECK AND MOUNTING SHANKS



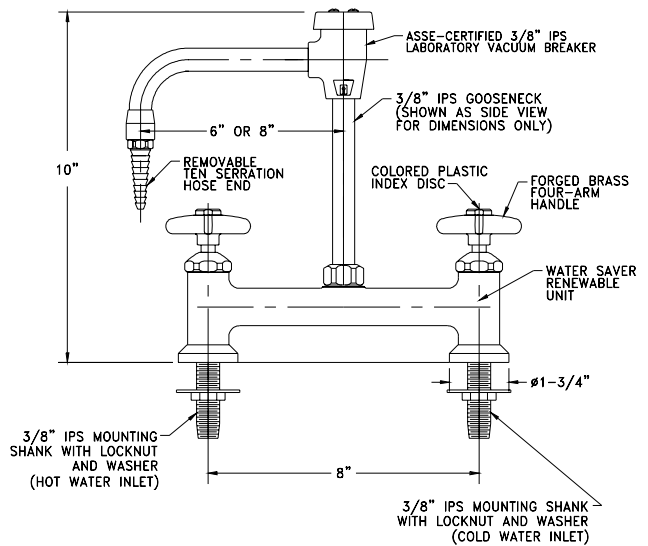
**L514VB-WS**  
 PANEL MOUNTED MIXING FAUCET WITH 6" RIGID/SWING VACUUM BREAKER GOOSENECK AND MOUNTING SHANKS



**L1514WS**  
 DECK MOUNTED LABORATORY FAUCET WITH 6" RIGID/SWING GOOSENECK AND MOUNTING SHANKS

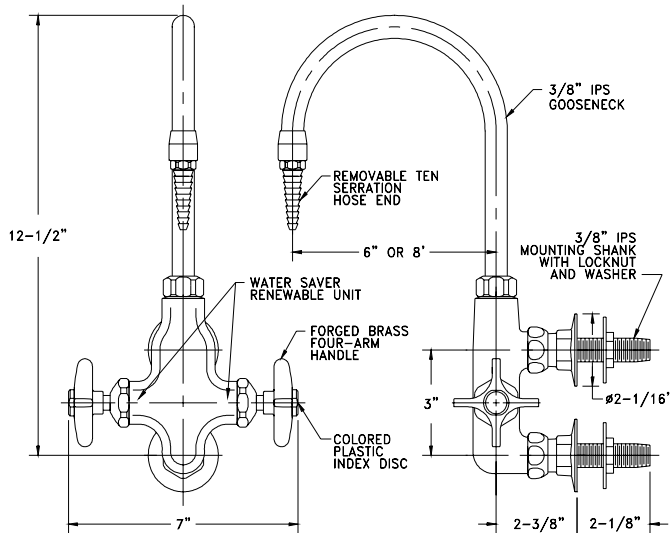


**L1514VB-WS**  
 DECK MOUNTED LABORATORY FAUCET WITH 6" RIGID/SWING VACUUM BREAKER GOOSENECK AND MOUNTING SHANKS

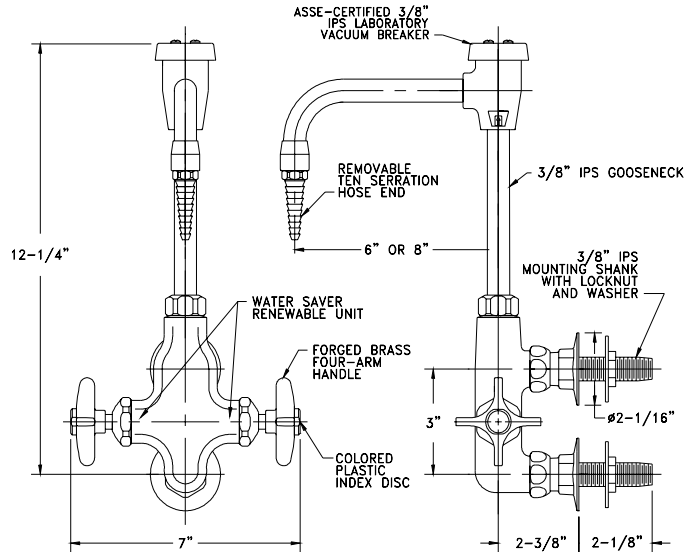


**All items on this page in stock and available for immediate shipment**

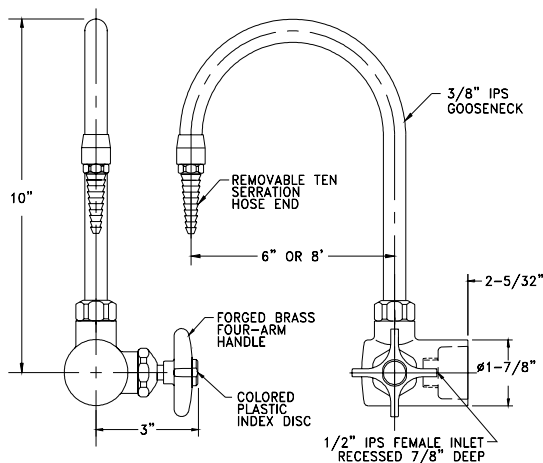
**L214WS**  
 PANEL MOUNTED MIXING FAUCET WITH 6" RIGID/SWING GOOSENECK AND MOUNTING SHANKS



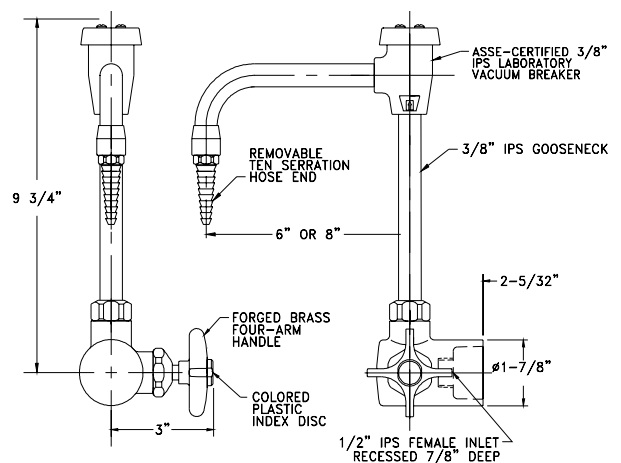
**L214VB-WS**  
 PANEL MOUNTED MIXING FAUCET WITH 6" RIGID/SWING VACUUM BREAKER GOOSENECK AND MOUNTING SHANKS



**L2714WS**  
 PANEL MOUNTED SINGLE FAUCET WITH 6" RIGID/SWING GOOSENECK AND MOUNTING SHANK



**L2714VB-WS**  
 PANEL MOUNTED SINGLE FAUCET WITH 6" RIGID/SWING VACUUM BREAKER GOOSENECK AND MOUNTING SHANK

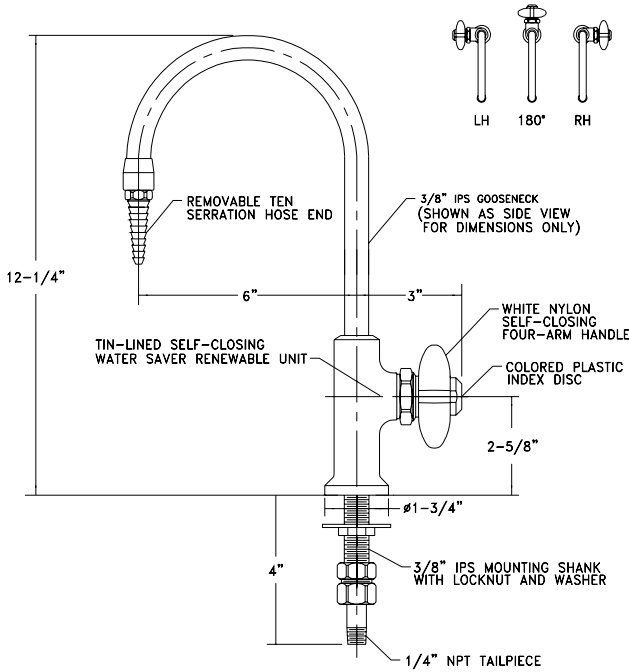


**All items on this page in stock and available for immediate shipment**

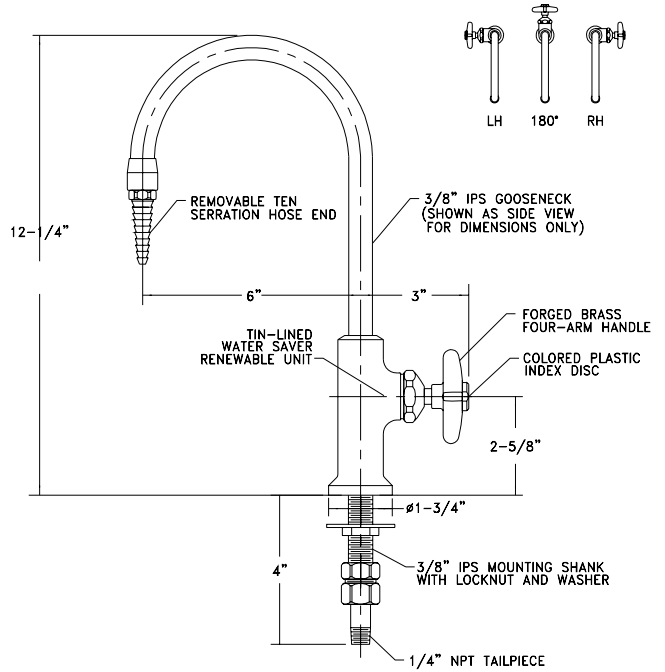


# **PRIME industries inc.**

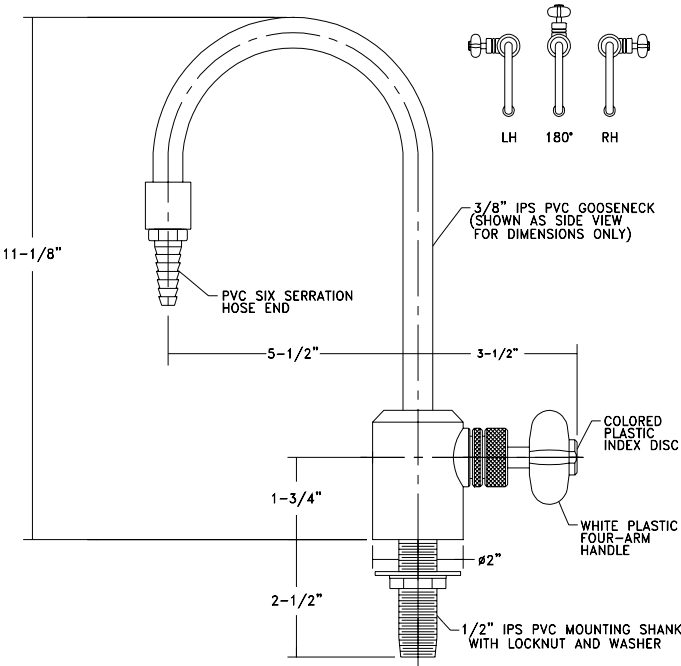
**L681**  
PURE WATER FAUCET, SELF-CLOSING, TIN-LINED BRASS, DECK MOUNTED,  
6" RIGID GOOSENECK



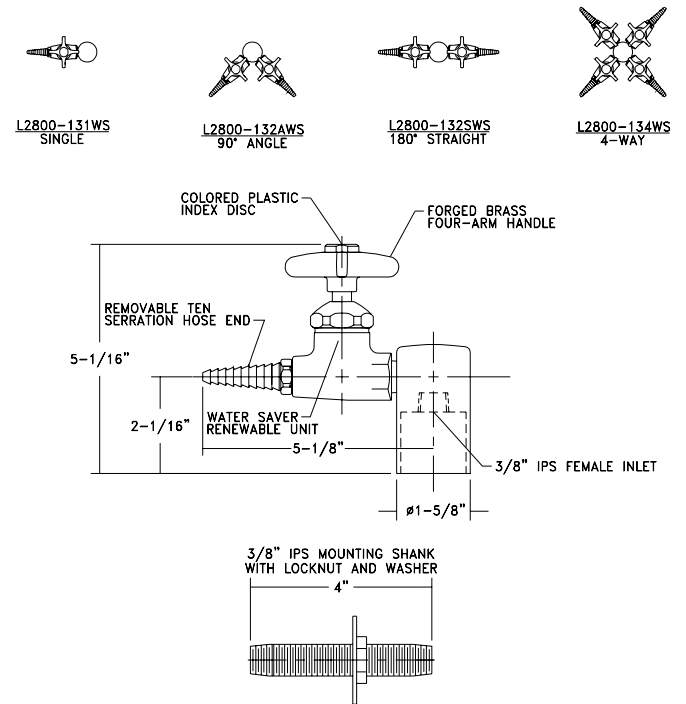
**L691**  
PURE WATER FAUCET, TIN-LINED BRASS, DECK MOUNTED, 6" RIGID GOOSENECK



**L7611WSA**  
DECK MOUNTED ALL-PVC SINGLE FAUCET WITH RIGID GOOSENECK, COMPRESSION  
CONTROL AND MOUNTING SHANK



**L2800-131WS**  
DECK MOUNTED TURRET BASE WITH SINGLE STRAIGHT PATTERN WATER VALVE

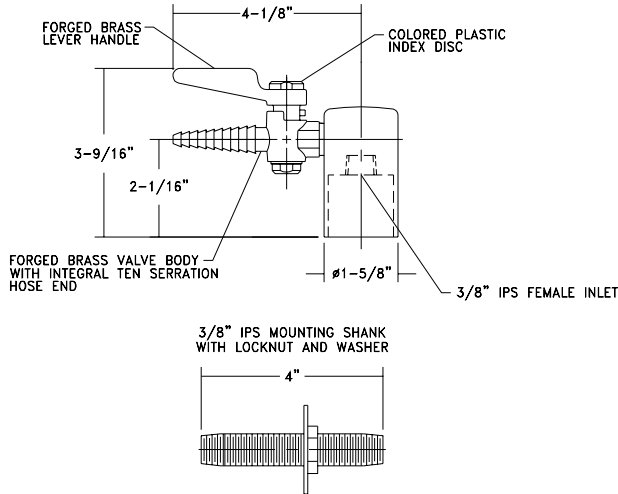
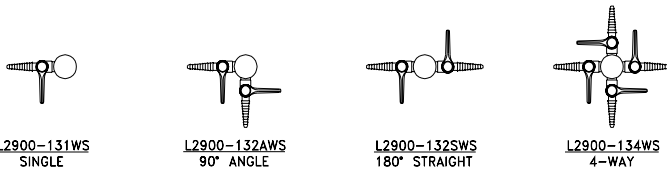


**All items on this page in stock and available for immediate shipment**

# **PRIME industries inc.**

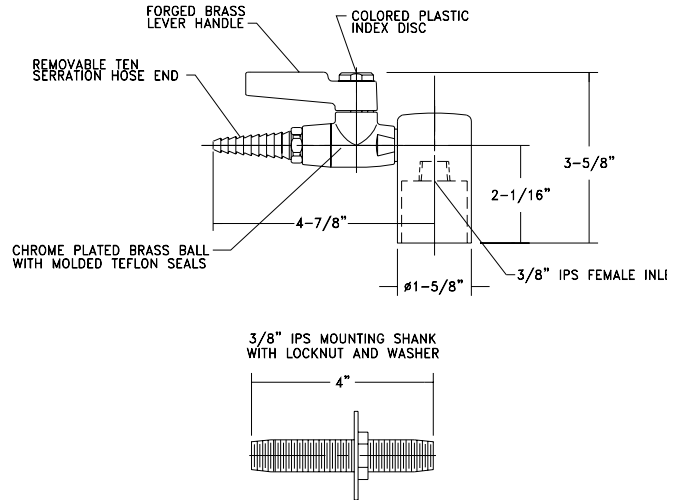
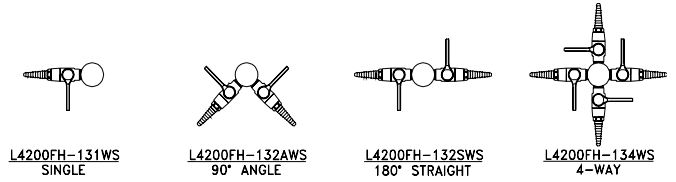
## L2900-131WS

DECK MOUNTED TURRET BASE WITH SINGLE GROUND KEY COCK VALVE WITH INTEGRAL STRAIGHT SERRATED HOSE END AND MOUNTING SHANK



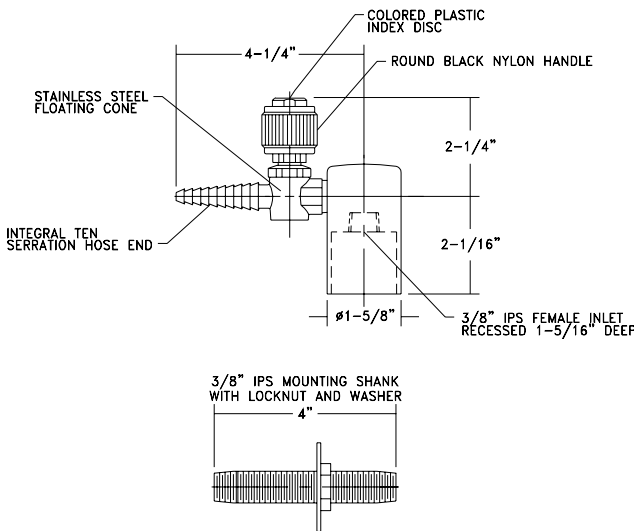
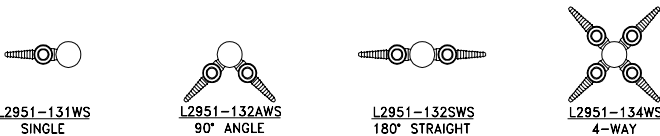
## L4200FH-131WS

SINGLE LABORATORY BALL VALVE FITTING, DECK MOUNTED, FORGED BRASS LEVER HANDLE AND MOUNTING SHANK



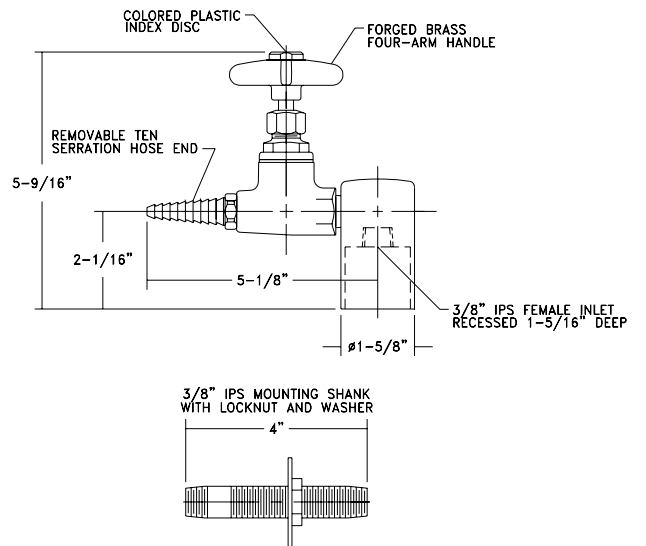
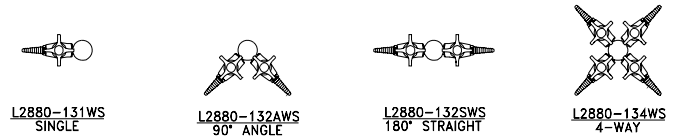
## L2951-131WS

DECK MOUNTED TURRET BASE WITH SINGLE LABORATORY NEEDLE POINT COCK WITH INTEGRAL STRAIGHT SERRATED HOSE END AND MOUNTING SHANK



## L2880-131WS

DECK MOUNTED TURRET BASE WITH SINGLE STRAIGHT PATTERN LABORATORY NEEDLE VALVE AND MOUNTING SHANK



All items on this page in stock and available for immediate shipment

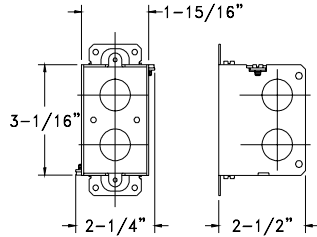
## ELECTRICAL ITEMS AND ASSEMBLIES

RECEPTACLES, DATA JACKS & FACE PLATES AVAILABLE ON REQUEST

ALL PEDESTAL BOXES COME SUPPLIED WITH 3" x 3/4" IPS MOUNTING SHANK & LOCKNUT

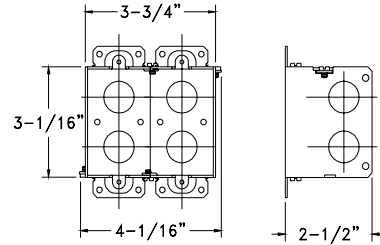
### E2300

SINGLE GANG RECESSED ELECTRICAL BOX



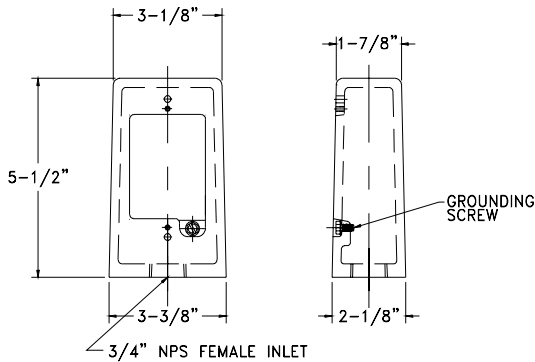
### E2500

DOUBLE GANG RECESSED ELECTRICAL BOX



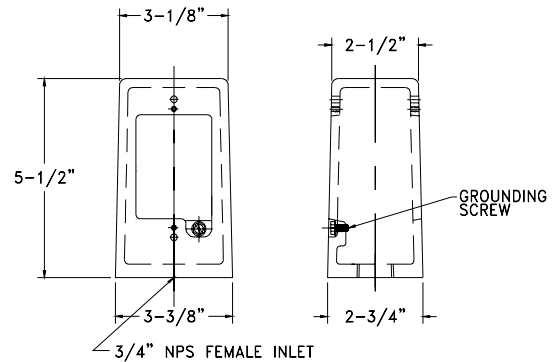
### E300SA-WS

SINGLE GANG, SINGLE FACE PEDESTAL BOX WITH SATIN FINISH AND MOUNTING SHANK



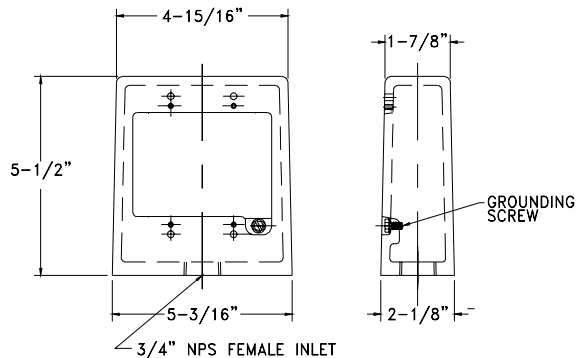
### E400SA-WS

SINGLE GANG, DOUBLE FACE PEDESTAL BOX WITH SATIN FINISH AND MOUNTING SHANK



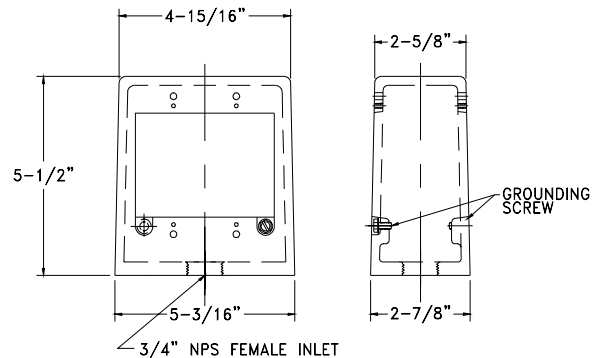
### E500SA-WS

DOUBLE GANG, SINGLE FACE PEDESTAL BOX WITH SATIN FINISH AND MOUNTING SHANK



### E600SA-WS

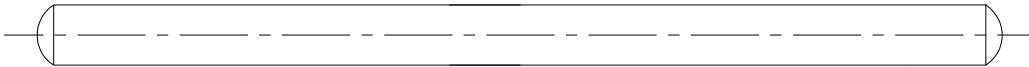
DOUBLE GANG, DOUBLE FACE PEDESTAL BOX WITH SATIN FINISH AND MOUNTING SHANK



**All items on this page in stock and available for immediate shipment**

## 3/4" ALUMINUM APPARATUS ROD COMPONENTS

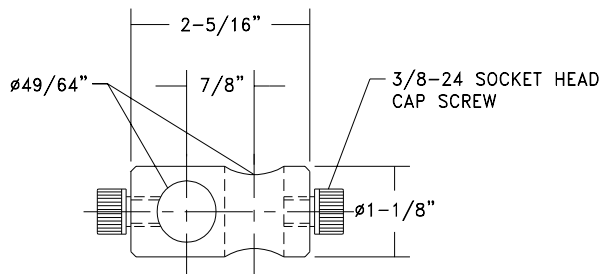
AAP155-039  
3/4" DIA. ALUMINUM CROSSBAR - 36" LONG



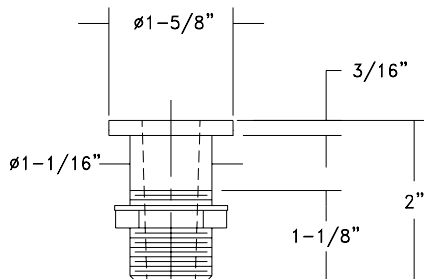
AAP110-036  
3/4" DIA. ALUMINUM VERTICAL ROD WITH TAPERED END - 36" HIGH



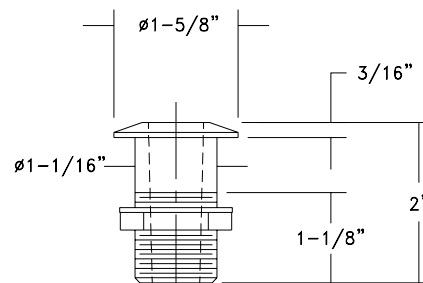
AAP150  
ALUMINUM 3/4" ADJUSTABLE CLAMP



AAP100  
ALUMINUM BURETTE SOCKET  
FOR RECESS MOUNTING



AAP101  
ALUMINUM BURETTE SOCKET  
FOR SURFACE MOUNTING

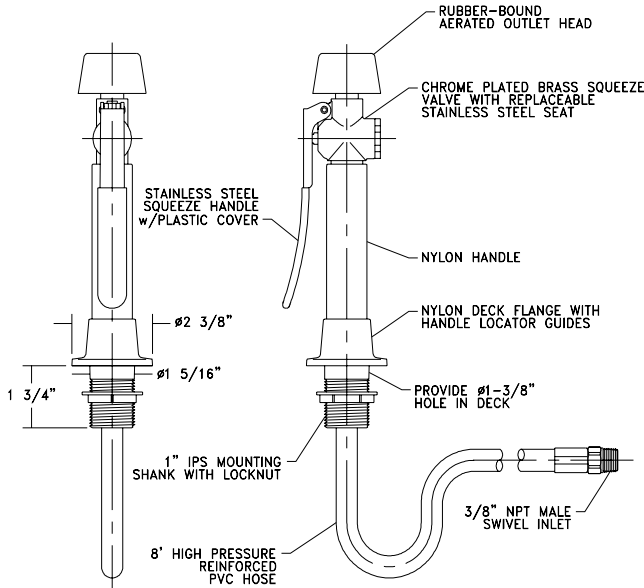


NOTE:  
ALUMINUM APPARATUS COMPONENTS  
ARE FURNISHED WITH A SATIN (BRUSHED)  
ALUMINUM FINISH

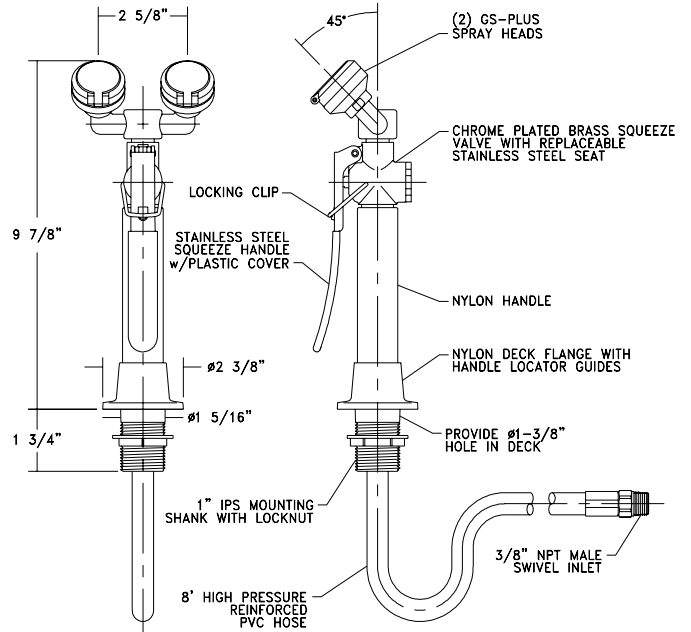
All items on this page in stock and available for immediate shipment

# PRIME industries inc.

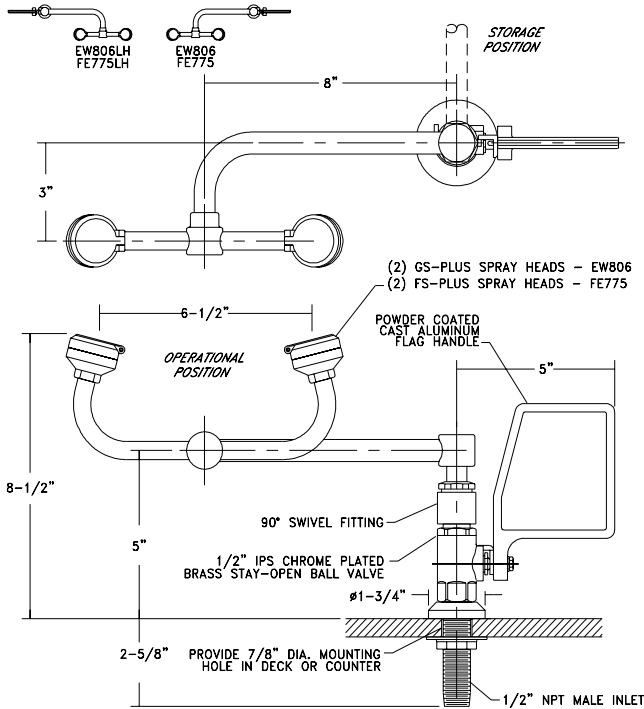
**EW1020RC**  
DRENCH HOSE UNIT, DECK MOUNTED, RUBBER AERATED OUTLET HEAD



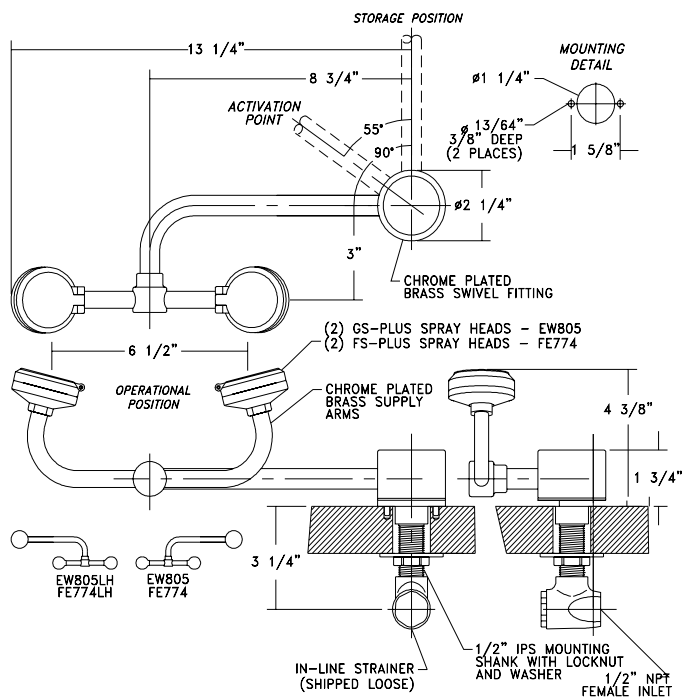
**EW1022**  
EYE WASH/DRENCH HOSE UNIT, DECK MOUNT



**EW806**  
DECK MOUNTED EYE WASH WITH TWO GS PLUS SRPAY HEADS, STAY-  
OPEN VALVE AND 90° SWIVEL FEATURE (RIGHT HAND MOUNTING)  
FE775  
SAME AS ABOVE EXCEPT WITH FS PLUS SPRAY HEADS



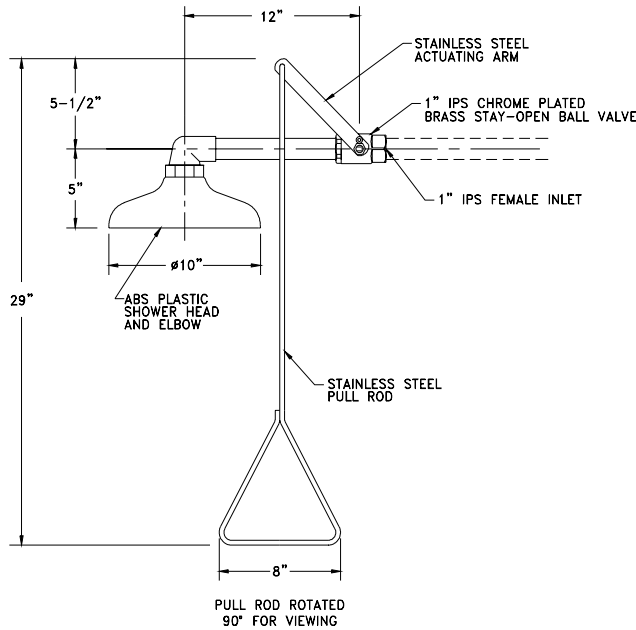
**EW805**  
FACE WASH, DECK MOUNTED, 90° "AUTO FLOW" SWIVEL STYLE  
FE774  
SAME AS ABOVE, BUT EYE/FACE WASH



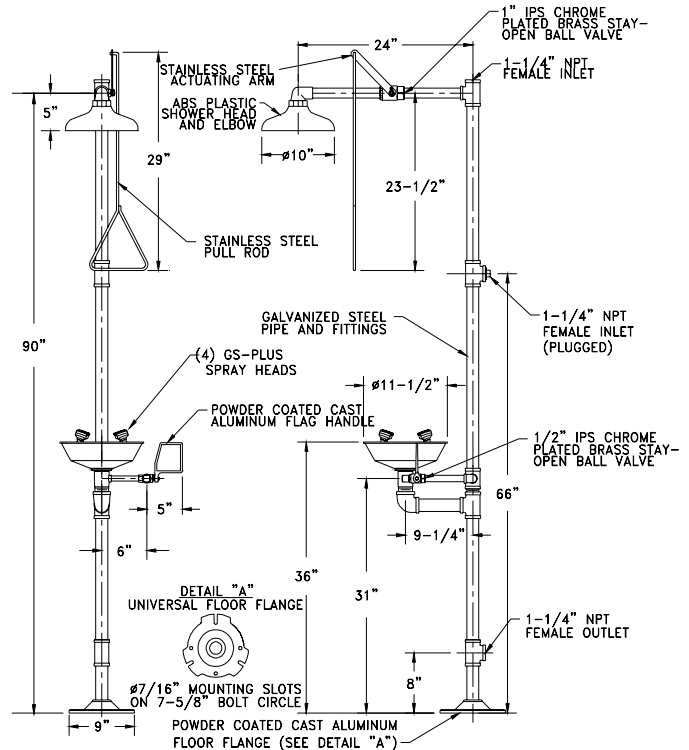
**All items on this page in stock and available for immediate shipment**



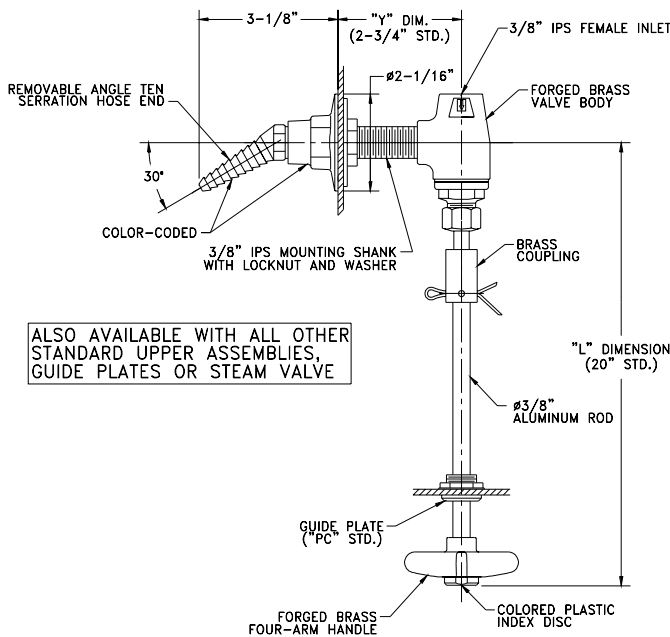
**ES643**  
HORIZONTALLY MOUNTED EMERGENCY SHOWER WITH STAY-OPEN VALVE AND PULL ROD



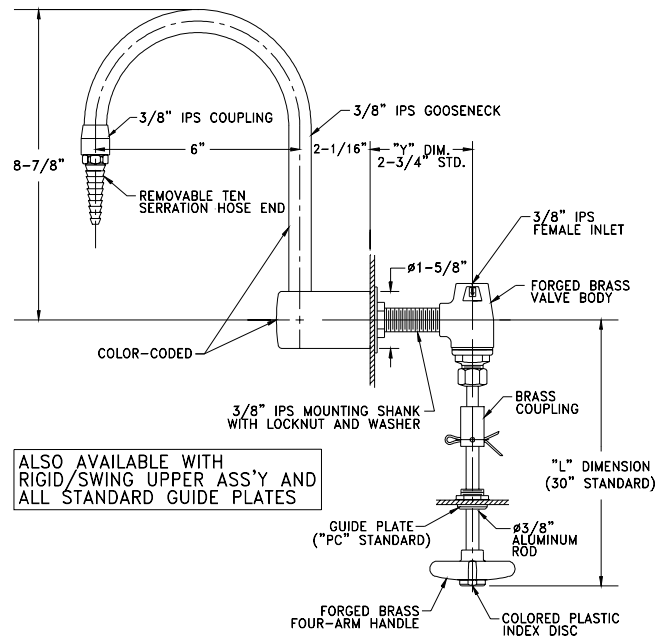
**SS909**  
SAFETY STATION WITH STAY-OPEN SHOWER VALVE AND EYE/FACE WASH WITH STAINLESS STEEL BOWL AND STAY-OPEN BALL VALVE



**L3185N-LR**  
REMOTE CONTROL NEEDLE VALVE WITH PANEL MOUNTED FLANGE WITH ANGLE SERRATED HOSE END AND MOUNTING SHANK  
**L3185N-PH-LRP**  
SAME AS ABOVE EXCEPT WITH BLACK NYLON HANDLE AND COLOR-CODED NYLON OUTLET ASSEMBLY



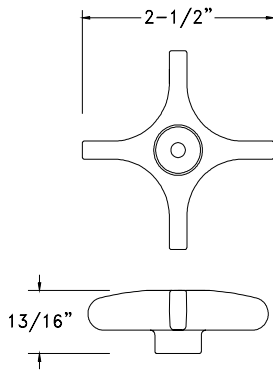
**L3185W-9**  
REMOTE CONTROL WATER VALVE WITH PANEL MOUNTED TURRET BASE WITH 6\" RIGID GOOSENECK AND MOUNTING SHANK  
**L3185W-PH-9**  
SAME AS ABOVE EXCEPT WITH BLACK NYLON HANDLE



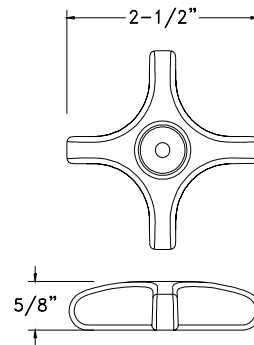
All items on this page in stock and available for immediate shipment

MISCELLANEOUS. ITEMS  
HANDLES AND SHANKS

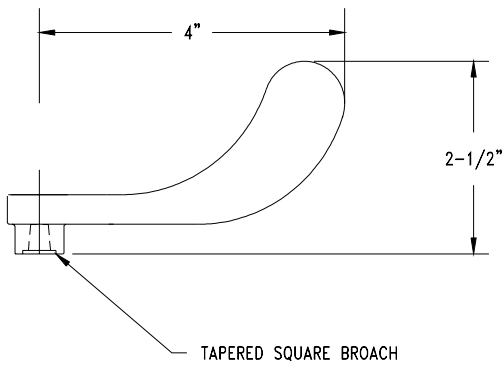
**BA013TS**  
FORGED BRASS FOUR-ARM HANDLE



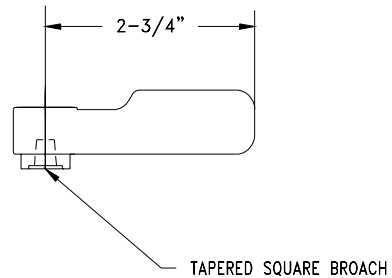
**PA021TS**  
COLORED NYLON FOUR-ARM HANDLE



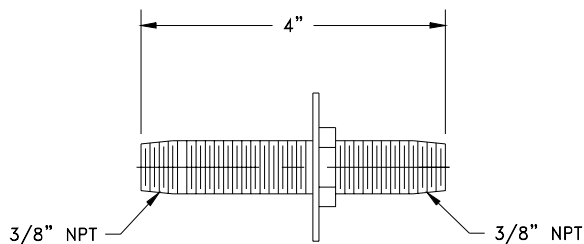
**BA039TS**  
FORGED BRASS WRIST BLADE



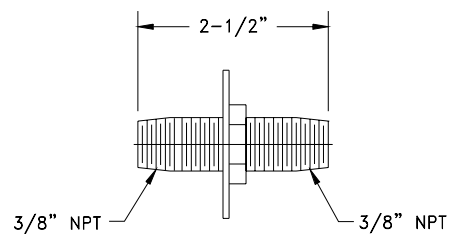
**BA037TS**  
FORGED BRASS LEVER HANDLE



**BI136-04R**  
3/8" IPS 4" MOUNTING SHANK WITH  
LOCKNUT AND WASHER



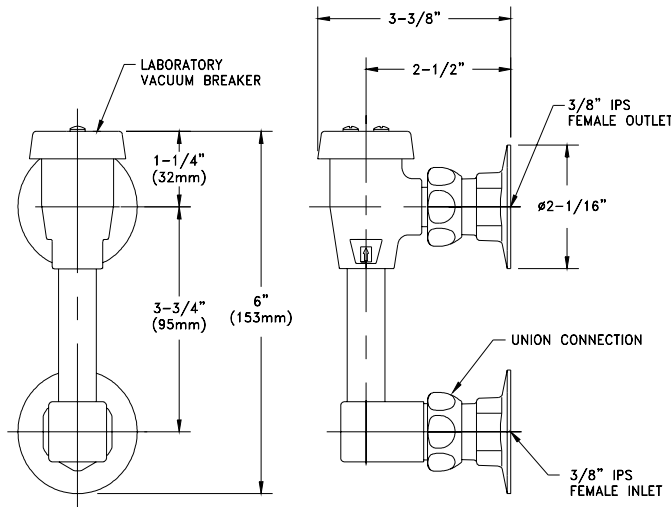
**BI136-02-08R**  
3/8" IPS x 2 1/2" MOUNTING SHANK WITH  
LOCKNUT AND WASHER



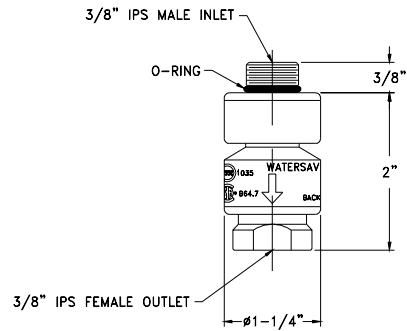
**All items on this page in stock and available for immediate shipment**

## MISCELLANEOUS ITEMS VACUUM BREAKERS, OUTLET FITTINGS AND RENEWABLE UNIT

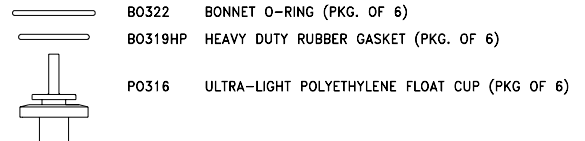
**L112**  
PANEL MOUNTED ATMOSPHERIC VACUUM BREAKER  
WITH 3/8" IPS INLET AND OUTLET



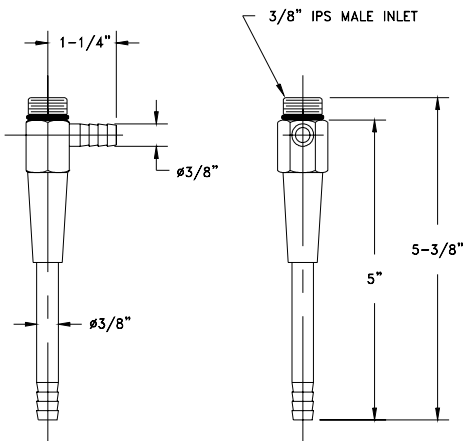
**L110**  
3/8" IPS LABORATORY IN-LINE VACUUM BREAKER



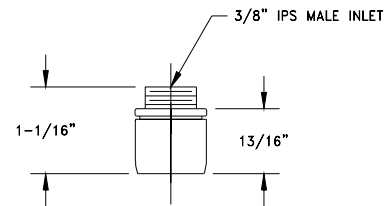
**RK100**  
REPAIR KIT FOR L100 VACUUM BREAKER



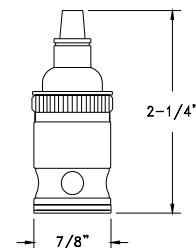
**B0127S**  
LABORATORY ASPIRATOR FITTING WITH 3/8" NPS  
MALE THREAD



**B0055**  
AERATOR FITTING



**BNV200**  
COMPRESSION CONTROL RENEWABLE UNIT

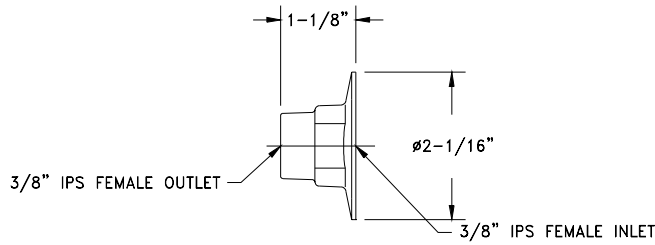


- NOTES:**
1. IF TIN-LINED RENEWABLE UNIT FOR DISTILLED OR DEIONIZED WATER IS REQUIRED, ADD SUFFIX "-TL".
  2. IF FIXTURE HAS WRIST BLADE OR LEVER HANDLES, COLD WATER SERVICE REQUIRES UNIT WITH LEFT HAND THREAD. ORDER "LH" UNIT.
  3. BNV040HD VALVE DISC (HARD) IS USED WITH BA036 AND BA039 WRIST BLADE HANDLES. ORDER BNV200AC-HD.

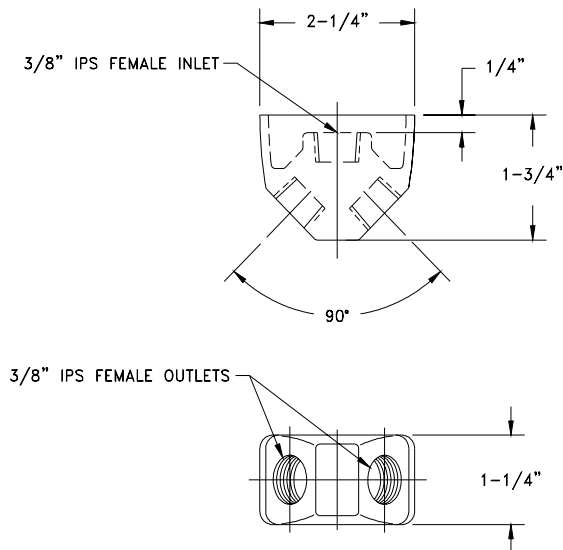
**All items on this page in stock and available for immediate shipment**

## MISCELLANEOUS ITEMS FLANGES, OUTLET FITTINGS AND RIGID/SWING ADAPTER

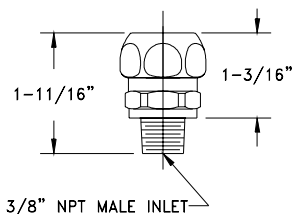
**BI158**  
3/8" IPS FLANGE



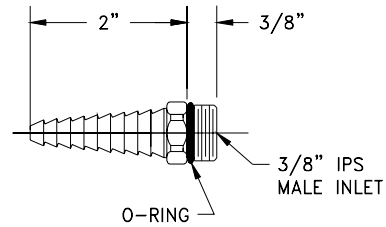
**BI146**  
PANEL MOUNTED "Y" FITTING



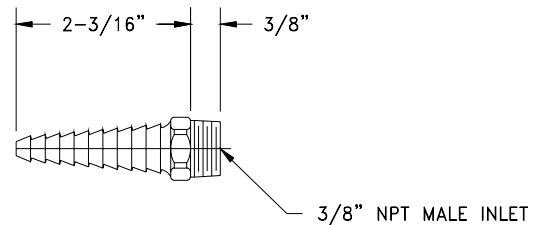
**BO356COMP**  
RIGID/SWING ADAPTOR FOR USE WITH FAUCET BODY WITH 3/8" NPT FEMALE OUTLET TO CONVERT FAUCET WITH RIGID GOOSENECK TO SWING



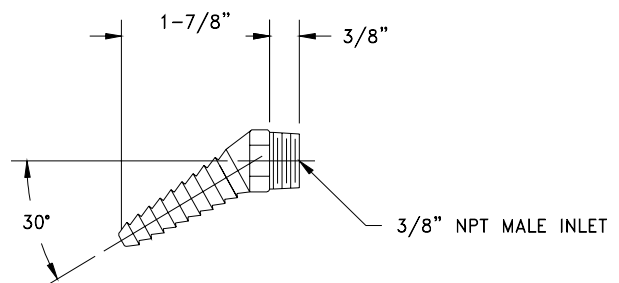
**BO140S**  
TEN SERRATION HOSE END WITH 3/8" IPS MALE INLET



**BO140T**  
TEN SERRATION HOSE END WITH 3/8" TAPERED PIPE THREAD



**BO142**  
ANGLE TEN SERRATION HOSE END, 3/8" NPT MALE INLET

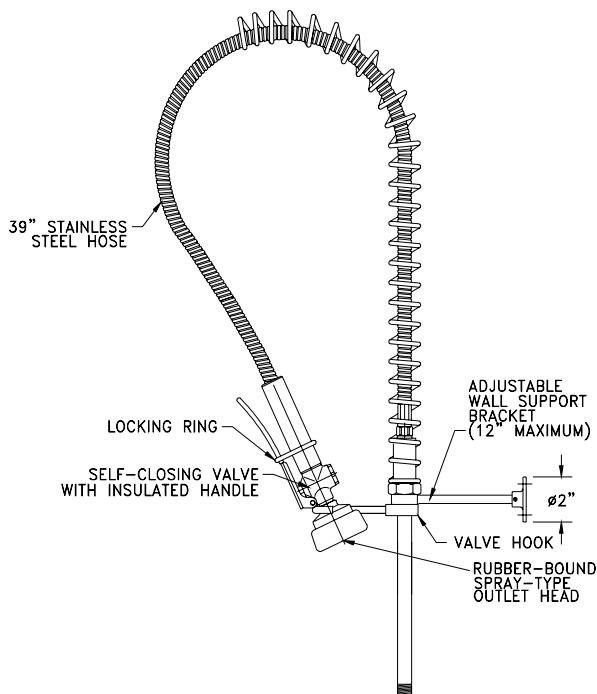


**All items on this page in stock and available for immediate shipment**

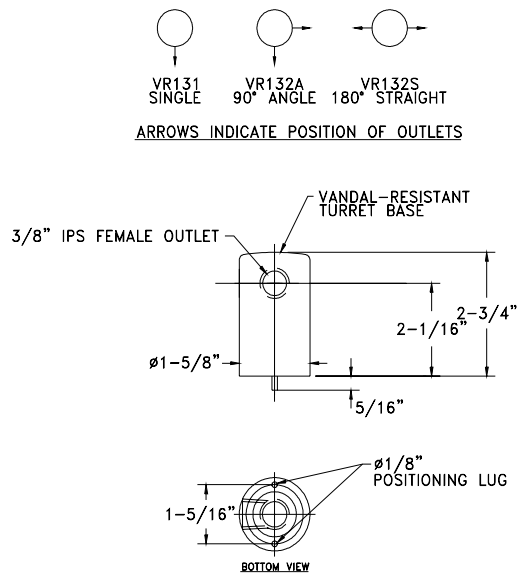
## MISCELLANEOUS ITEMS

PRE-RINSE, VANDAL RESISTANT TURRETS, FOOT PEDAL ITEMS

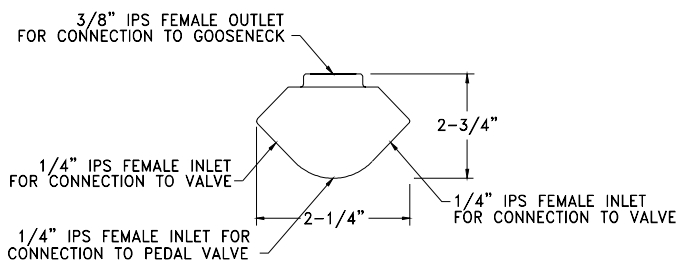
### PRE-RINSE PARTS RISER, HOSE, OUTLET, HOOK AND SUPPORT



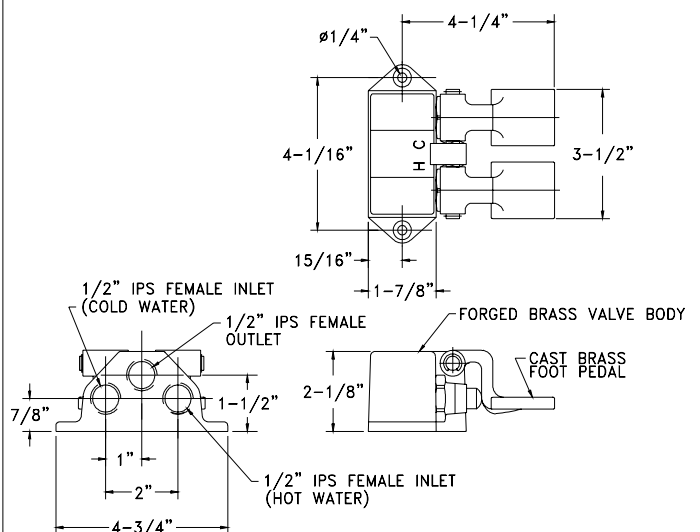
### VR131 DECK MOUNTED VANDAL-RESISTANT TURRET BASE



### BI143TWI-1/4 THIRD WATER INLET FOR CONNECTION TO PEDAL VALVE



### L3001 FLOOR MOUNTED FOOT-OPERATED SELF-CLOSING MIXING VALVE



All items on this page in stock and available for immediate shipment



**Notes**



## Notes